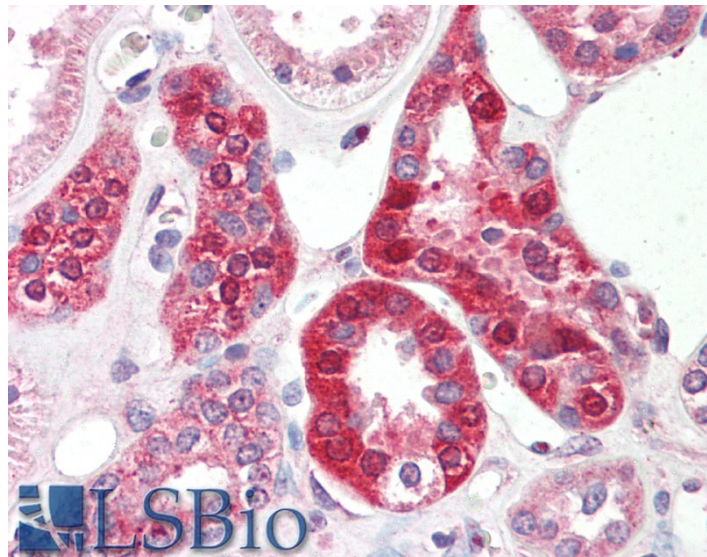


GOAT ANTI-CREATINE TRANSPORTER 1 / SLC6A8 ANTIBODY

SKU: EB10642



SPECIFICATIONS

Formulation Supplied at 0.5 mg/ml in Tris saline, 0.02% sodium azide, pH7.3 with 0.5% bovine serum albumin.

Unit Size 100 µg

Storage Instructions Aliquot and store at -20°C. Minimize freezing and thawing.

Synonym / Alias Names sodium- and chloride-dependent creatine transporter 1| creatine transporter SLC6A8| creatine transporter 1| MGC87396| CT1| CRTR| CRT| solute carrier family 6 (neurotransmitter transporter, creatine), member 8|SLC6A8

Accession ID NP_005620.1; NP_001136277.1; NP_001136278.1

Blocking Peptide EBP10642

Immunogen Peptide with sequence ASLANLTCDQLADRR, from the internal region of the protein sequence according to NP_005620.1; NP_001136277.1; NP_001136278.1.

Product Comments This antibody is expected to recognize all reported isoforms (NP_005620.1; NP_001136277.1; NP_001136278.1).

Peptide Sequence ASLANLTCDQLADRR

Purification Method	Purified from goat serum by ammonium sulphate precipitation followed by antigen affinity chromatography using the immunizing peptide.
Shipping Instructions	Refrigerated
Predicted Species	Human, Mouse, Rat, Dog, Pig, Cow
Reactive Species	Mouse, Human
Human Gene ID	6535
Mouse Gene ID	102857
Rat Gene ID	50690
Product Grade	https://prod-vector-labs-pimcore-assets.s3.us-east-1.amazonaws.com/assets/products/image/elite_medium.png
IHC Results	Paraffin embedded Human Kidney. Recommended concentration: 5µg/ml.
ELISA	
Detection Limit	Antibody detection limit dilution 1:8000.
Western Blot	Approx 70kDa band observed in Mouse Heart lysates (calculated MW of 71.0kDa according to Mouse NP_598748.1). Recommended concentration: 0.1-0.3µg/ml. Primary incubation was 1 hour.
Application Type	Pep-ELISA, WB, IHC

DOCUMENTS

- [Data Sheet](#)

GALLERY IMAGES

