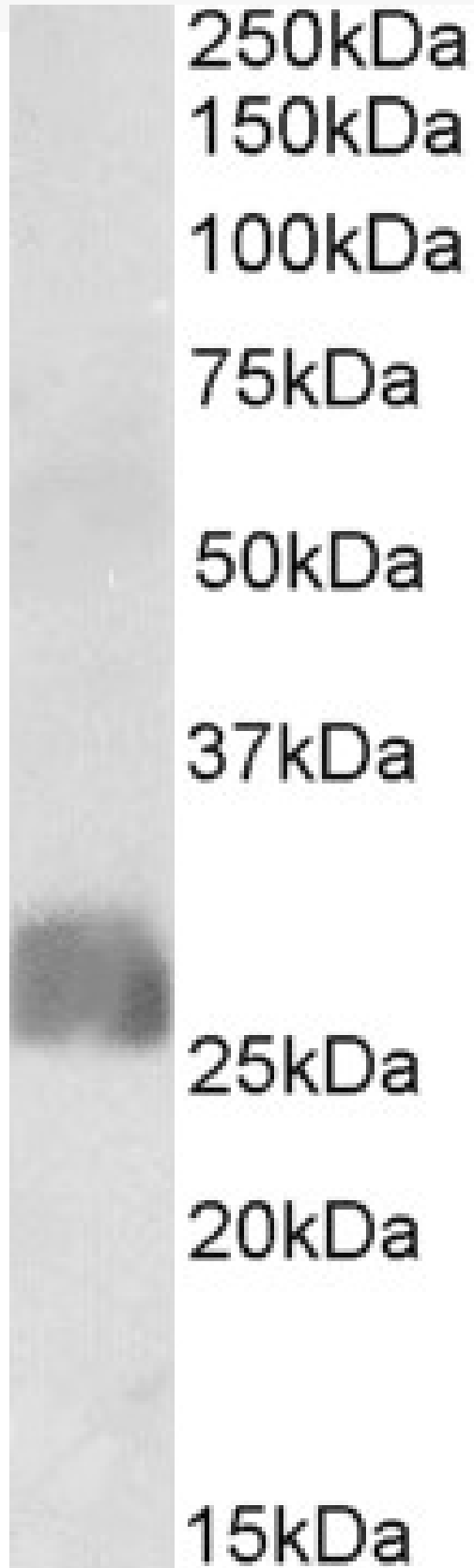


GOAT ANTI-CREB3L2 ANTIBODY

SKU: EB12174



SPECIFICATIONS

Formulation	Supplied at 0.5 mg/ml in Tris saline, 0.02% sodium azide, pH7.3 with 0.5% bovine serum albumin.
Unit Size	100 µg
Storage Instructions	Aliquot and store at -20°C. Minimize freezing and thawing.
Synonym / Alias Names	CREB3L2 cAMP responsive element binding protein 3-like 2 BBF2H7 B-ZIB transcription factor BBF2 human homolog on chromosome 7 FUS/BBF2H7 protein TCAG_1951439 basic transcription factor 2 cAMP-responsive element-binding protein 3-like protein 2 cyclic AMP-responsive element-binding protein 3-like protein 2
Accession ID	NP_919047.2; NP_001240704.1
Blocking Peptide	EBP12174
Immunogen	Peptide with sequence DRKLSELPDGE-C, from the N Terminus of the protein sequence according to NP_919047.2; NP_001240704.1.
Product Comments	This antibody is expected to recognize both reported isoforms (NP_919047.2; NP_001240704.1).
Peptide Sequence	DRKLSELPDGE-C
Purification Method	Purified from goat serum by ammonium sulphate precipitation followed by antigen affinity chromatography using the immunizing peptide.
Shipping Instructions	Refrigerated
Predicted Species	Human
Reactive Species	Human
Human Gene ID	64764
Product Grade	https://prod-vector-labs-pimcore-assets.s3.us-east-1.amazonaws.com/assets/products/image/elite_medium.png
IHC Results	In paraffin embedded Human Placenta shows staining in select nuclei. Recommended concentration, 5-10µg/ml.
ELISA Detection Limit	Antibody detection limit dilution 1:128000.
Western Blot	Approx 26kDa band observed in Human Placenta lysates (calculated MW of 27.7kDa according to NP_001240704.1). Recommended concentration: 1-3µg/ml.
Application Type	Pep-ELISA, WB, IHC

DOCUMENTS

- [Data Sheet](#)

GALLERY IMAGES

