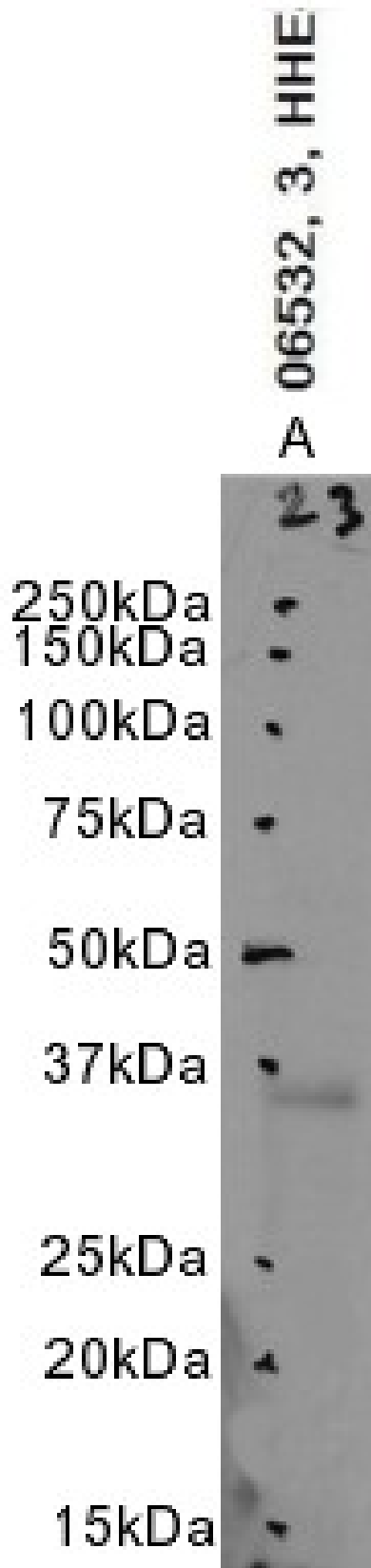


GOAT ANTI-CREM ANTIBODY

SKU: EB06532



SPECIFICATIONS

Formulation	Supplied at 0.5 mg/ml in Tris saline, 0.02% sodium azide, pH7.3 with 0.5% bovine serum albumin.
Unit Size	100 µg
Storage Instructions	Aliquot and store at -20°C. Minimize freezing and thawing.
Synonym / Alias Names	cAMP response element modulator; hCREM 2alpha-b protein OTTHUMP00000019443 OTTHUMP00000019442 inducible cAMP early repressor ICER hCREM 2beta-a protein hCREM 2alpha-b protein cAMP responsive element modulator hCREM-2 MGC111110 MGC41893 MGC17881 ICER CREM
Accession ID	NP_853549.1; NP_874387.1; NP_874388.1; NP_874393.1; NP_874394.1; NP_877570.1; NP_877571.1; NP_877572.1; NP_877573.1; NP_878270.1; NP_898883.1
Blocking Peptide	EBP06532
Immunogen	Peptide with sequence LETLKDICSPKTDY, from the C Terminus of the protein sequence according to NP_853549.1; NP_874387.1; NP_874388.1; NP_874393.1; NP_874394.1; NP_877570.1; NP_877571.1; NP_877572.1; NP_877573.1; NP_878270.1; NP_898883.1.
Product Comments	This antibody is expected to recognise the following protein isoforms of human CREM protein: a (NP_853549.1); e (NP_874387.1); f (NP_874388.1); k (NP_874393.1); l (NP_874394.1); m (NP_877570.1); n (NP_877571.1); o (NP_877572.1); p (NP_877573.1); q (NP_878270.1); v (NP_898883.1). This antibody is not expected to cross-react with CREB protein.
Peptide Sequence	LETLKDICSPKTDY
Purification Method	Purified from goat serum by ammonium sulphate precipitation followed by antigen affinity chromatography using the immunizing peptide.
Shipping Instructions	Refrigerated
Predicted Species	Human
Reactive Species	Human
Human Gene ID	1390
Product Grade	https://prod-vector-labs-pimcore-assets.s3.us-east-1.amazonaws.com/assets/products/image/elite_medium.png
ELISA Detection Limit	Antibody detection limit dilution 1:16000.
Western Blot	Approx. 35-37kDa band observed in Human Heart lysates, and in preliminary testing of Human Kidney lysate (calculated MW of 32.5kDa according to Human NP_853549.1). Recommended concentration: 2-3µg/ml. Primary incubation 1 hour at room temperature. <p>A customer reported a band at approx. 35-37kDa in Rat Heart lysates after 3ug/ml primary ab concentration (calculated MW of 38.5kDa according to NP_001258030.1). Primary incubation 1 hour at room temperature.</p>

Application
Type Pep-ELISA, WB

DOCUMENTS

- [Data Sheet](#)

GALLERY IMAGES

