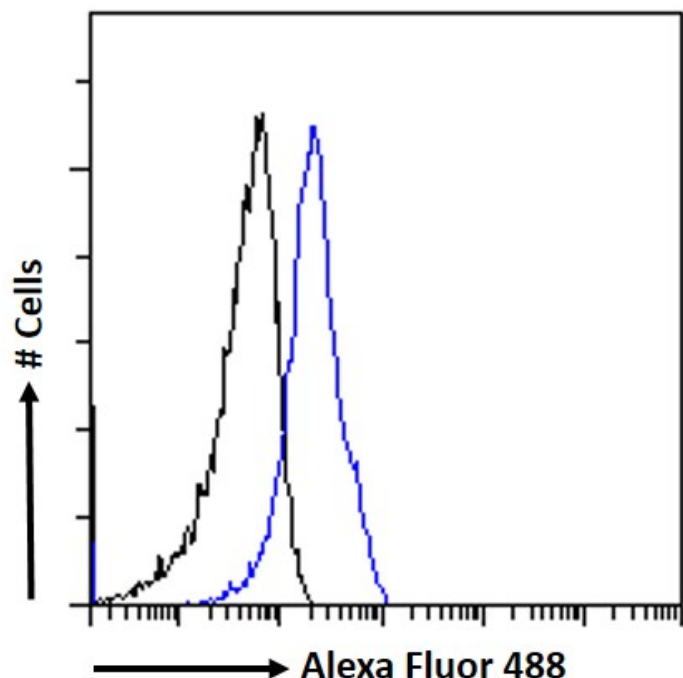


GOAT ANTI-CRIPTO ANTIBODY

SKU: EB08605



SPECIFICATIONS

Formulation Supplied at 0.5 mg/ml in Tris saline, 0.02% sodium azide, pH7.3 with 0.5% bovine serum albumin.

Unit Size 100 µg

Storage Instructions Aliquot and store at -20°C. Minimize freezing and thawing.

Synonym /

Alias Names Cripto-1|CRIPTO|CRGF|CR|teratocarcinoma-derived growth factor 1|TDGF1

Usage Summary **Immunofluorescence:** Strong expression of the protein seen in HepG2 and U2OS cells. Recommended concentration: 10µg/ml. **Flow Cytometry:** Flow cytometric analysis of HepG2 cells. Recommended concentration: 10ug/ml.

Accession ID NP_003203.1; NP_001167607.1

Blocking Peptide EBP08605

Immunogen	Peptide with sequence YGRNCEHDVRKEN, from the internal region of the protein sequence according to NP_003203.1; NP_001167607.1.
Peptide Sequence	YGRNCEHDVRKEN
Purification Method	Purified from goat serum by ammonium sulphate precipitation followed by antigen affinity chromatography using the immunizing peptide.
Shipping Instructions	Refrigerated
Predicted Species	Human
Reactive Species	Human
Human Gene ID	6997
Mouse Gene ID	21667
Rat Gene ID	680246
Product Grade	https://prod-vector-labs-pimcore-assets.s3.us-east-1.amazonaws.com/assets/products/image/elite_medium.png
ELISA	
Detection Limit	Antibody detection limit dilution 1:4000.
Application Type	Pep-ELISA, FC, IF

DOCUMENTS

- [Data Sheet](#)

GALLERY IMAGES

