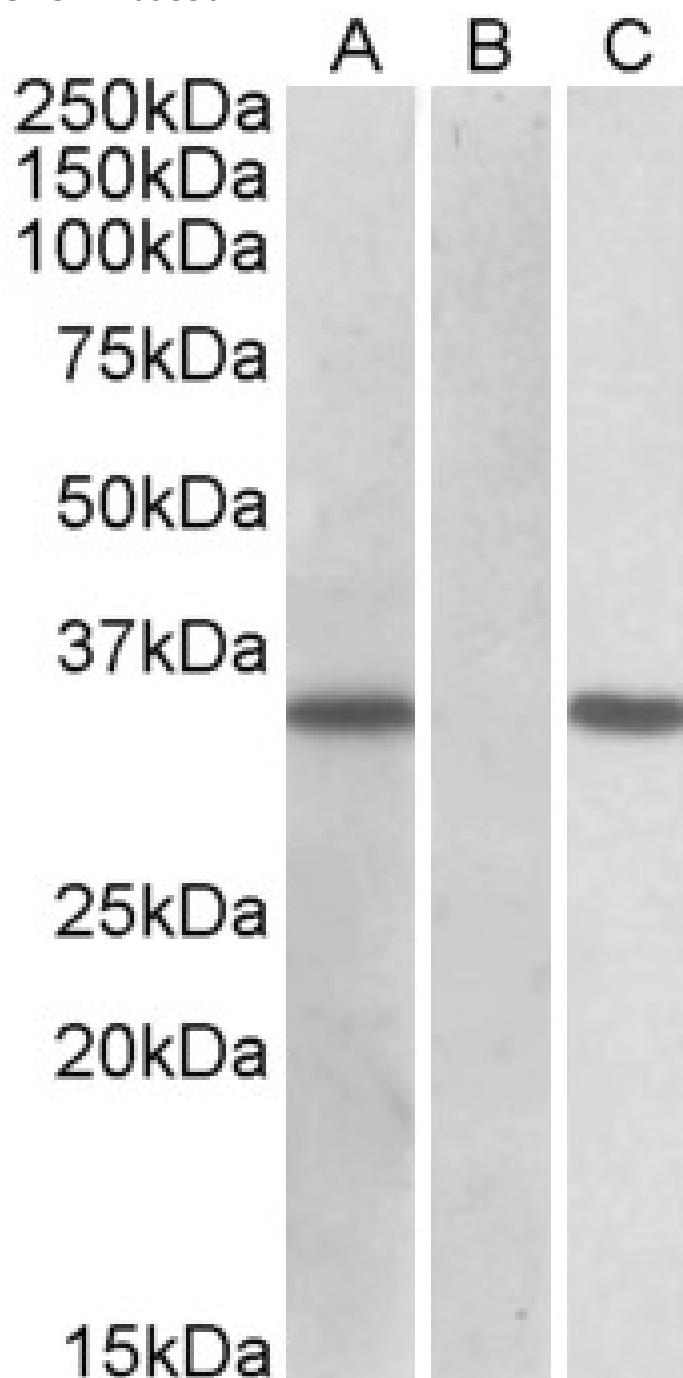


## GOAT ANTI-CRISP2 (AA77-89) ANTIBODY

SKU: EB09850



## SPECIFICATIONS

<b>Formulation</b>	Supplied at 0.5 mg/ml in Tris saline, 0.02% sodium azide, pH7.3 with 0.5% bovine serum albumin.
<b>Unit Size</b>	100 µg
<b>Storage Instructions</b>	Aliquot and store at -20°C. Minimize freezing and thawing.
<b>Synonym / Alias</b>	CRISP2 TSP1 TPX1 testis specific protein 1 (probe H4-1 p3-1) OTTHUMP00000016589 MGC111136 glyceraldehyde-3-phosphate dehydrogenase-like
<b>Names</b>	5 GAPDL5 cysteine-rich secretory protein 2 CRISP-2
<b>Accession ID</b>	NP_003287.1
<b>Blocking Peptide</b>	EBP09850
<b>Immunogen</b>	Peptide with sequence KCTLQHSDPEDRK, from the internal region of the protein sequence according to NP_003287.1.
<b>Product Comments</b>	Reported variants represent identical protein: NP_003287.1, NP_001135879.1, NP_001135889.1, NP_001135907.1, NP_001135880.1.
<b>Peptide Sequence</b>	KCTLQHSDPEDRK
<b>Purification Method</b>	Purified from goat serum by ammonium sulphate precipitation followed by antigen affinity chromatography using the immunizing peptide.
<b>Shipping Instructions</b>	Refrigerated
<b>Predicted Species</b>	Human, Pig, Dog, Cow
<b>Human Gene ID</b>	7180
<b>Product Grade</b>	<a href="https://prod-vector-labs-pimcore-assets.s3.us-east-1.amazonaws.com/assets/products/image/elite_medium.png">https://prod-vector-labs-pimcore-assets.s3.us-east-1.amazonaws.com/assets/products/image/elite_medium.png</a>
<b>ELISA Detection Limit</b>	Antibody detection limit dilution 1:128000.
<b>Western Blot</b>	In transfected HEK293 transiently expressing Human CRISP2 (MYC and DYKDDDDK tagged), a band of approx. 35kDa was observed. No bands were observed in mock-transfected HEK293 and the same band was observed using anti-myc tag antibody. Recommended concentration, 0.05-0.1µg/ml.
<b>Application Type</b>	Pep-ELISA, WB-Trf

## DOCUMENTS

- [Data Sheet](#)

## GALLERY IMAGES

