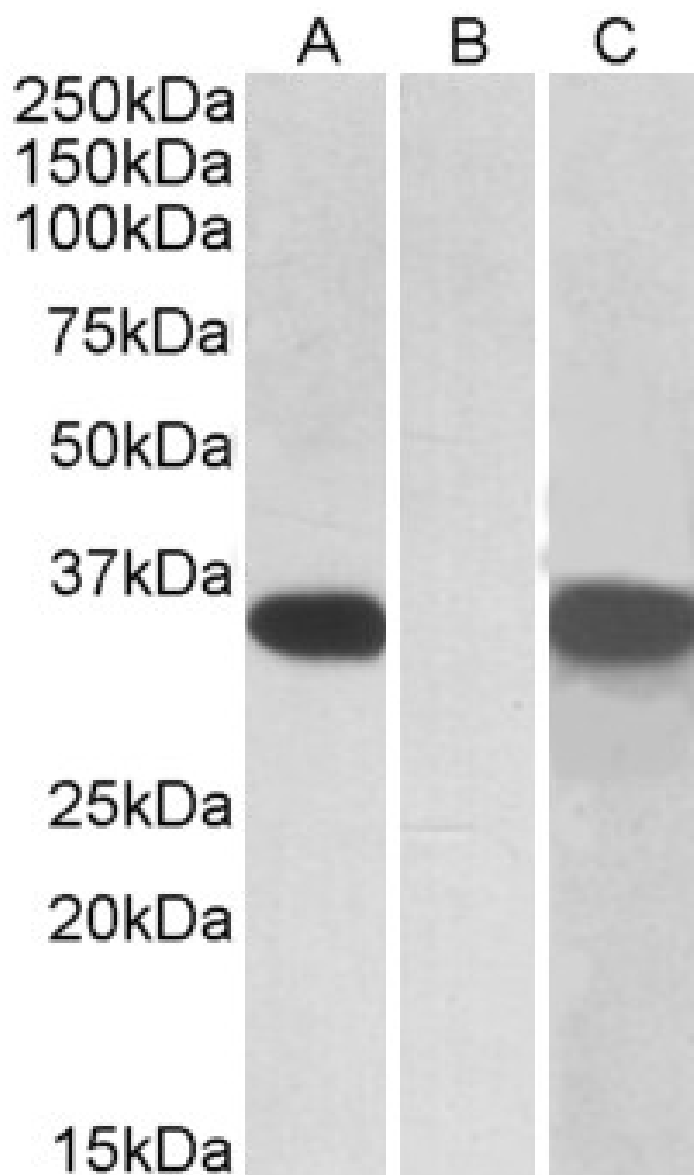


GOAT ANTI-CRISP2 ANTIBODY

SKU: EB09849



SPECIFICATIONS

Formulation	Supplied at 0.5 mg/ml in Tris saline, 0.02% sodium azide, pH7.3 with 0.5% bovine serum albumin.
Unit Size	100 µg
Storage Instructions	Aliquot and store at -20°C. Minimize freezing and thawing.
Synonym / Alias	CRISP2 TSP1 TPX1 testis specific protein 1 (probe H4-1 p3-1) OTTHUMP00000016589 MGC111136 glyceraldehyde-3-phosphate dehydrogenase-like
Names	5 GAPDL5 cysteine-rich secretory protein 2 CRISP-2
Accession ID	NP_003287.1
Blocking Peptide	EBP09849
Immunogen	Peptide with sequence C-QHSDPEDRKTSTR, from the internal region of the protein sequence according to NP_003287.1.
Product Comments	Reported variants represent identical protein: NP_003287.1, NP_001135879.1, NP_001135889.1, NP_001135907.1, NP_001135880.1.
Peptide Sequence	C-QHSDPEDRKTSTR
Purification Method	Purified from goat serum by ammonium sulphate precipitation followed by antigen affinity chromatography using the immunizing peptide.
Shipping Instructions	Refrigerated
Predicted Species	Human, Pig, Dog
Reactive Species	Human
Human Gene ID	7180
Product Grade	https://prod-vector-labs-pimcore-assets.s3.us-east-1.amazonaws.com/assets/products/image/elite_medium.png
IHC Results	Paraffin embedded Human Testis. Recommended concentration: 3.75µg/ml.
ELISA Detection Limit	Antibody detection limit dilution 1:8000.
Western Blot	In transfected HEK293 transiently expressing Human CRISP2 (MYC and DYKDDDDK tagged), a band of approx. 35kDa was observed. No bands were observed in mock-transfected HEK293 and the same band was observed using anti-myc tag antibody. Recommended concentration: 0.5-1µg/ml. Primary incubations were for 1 hour. Preliminary experiments gave an approx 55kDa band in Human Testis lysates after 1µg/ml antibody staining. Please note that currently we cannot find an explanation in the literature for the band we observe given the calculated size of 27.3kDa according to NP_003287.1. The 55kDa band was successfully blocked by incubation with the immunizing peptide.
Application Type	Pep-ELISA, WB-Trf, IHC

DOCUMENTS

- [Data Sheet](#)

GALLERY IMAGES

