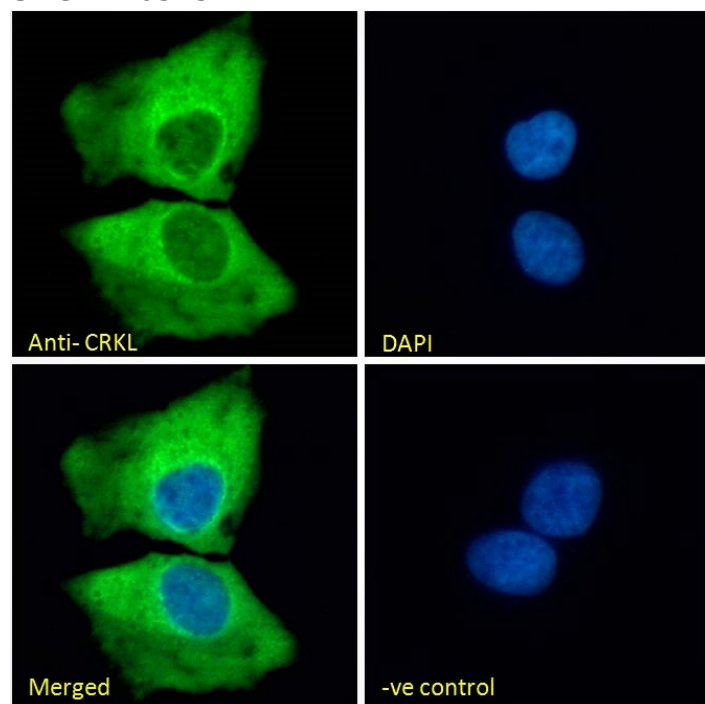


# GOAT ANTI-CRKL ANTIBODY

**SKU:** EB05254



## SPECIFICATIONS

<b>Formulation</b>	Supplied at 0.5 mg/ml in Tris saline, 0.02% sodium azide, pH7.3 with 0.5% bovine serum albumin.
<b>Unit Size</b>	100 µg
<b>Storage Instructions</b>	Aliquot and store at -20°C. Minimize freezing and thawing.
<b>Synonym / Alias Names</b>	OTTHUMP00000198539 v-crk avian sarcoma virus CT10 oncogene homolog-like v-crk sarcoma virus CT10 oncogene homolog (avian)-like CRKL
<b>Usage Summary</b>	<p><b>Immunofluorescence:</b> Strong expression of the protein seen in the cytoplasm of U2OS cells.</p> <p><b>Flow Cytometry:</b> Flow cytometric analysis of U2OS cells. Recommended concentration: 10ug/ml.</p>
<b>Accession ID</b>	NP_005198.1
<b>Blocking Peptide</b>	EBP05254
<b>Immunogen</b>	Peptide with sequence C-KIFDPQNPDENE, from the C Terminus of the protein sequence according to NP_005198.1.

<b>Peptide Sequence</b>	C-KIFDPQNPDENE
<b>Purification Method</b>	Purified from goat serum by ammonium sulphate precipitation followed by antigen affinity chromatography using the immunizing peptide.
<b>Shipping Instructions</b>	Refrigerated
<b>Predicted Species</b>	Human, Mouse, Rat
<b>Reactive Species</b>	Human, Mouse
<b>Human Gene ID</b>	1399
<b>Product Grade</b>	<a href="https://prod-vector-labs-pimcore-assets.s3.us-east-1.amazonaws.com/assets/products/image/elite_plus_medium.png">https://prod-vector-labs-pimcore-assets.s3.us-east-1.amazonaws.com/assets/products/image/elite_plus_medium.png</a>
<b>IHC Results</b>	In paraffin embedded Human Thymus shows staining of cellular membranes in thymocytes. Recommended concentration: 2.5-3.8µg/ml.
<b>ELISA Detection Limit</b>	Antibody detection limit dilution 1:16000.
<b>Western Blot</b>	Approx 37kDa band observed in lysates of cell lines K562, Daudi and NIH3T3 (calculated MW of 33.8kDa according to Human NP_005198.1 and Mouse NP_031790.2 ). Recommended concentration: 0.1-1µg/ml. Primary incubation 1 hour at room temperature.
<b>Application Type</b>	Pep-ELISA, WB, IHC, IF, FC

## DOCUMENTS

- [Data Sheet](#)

## GALLERY IMAGES

