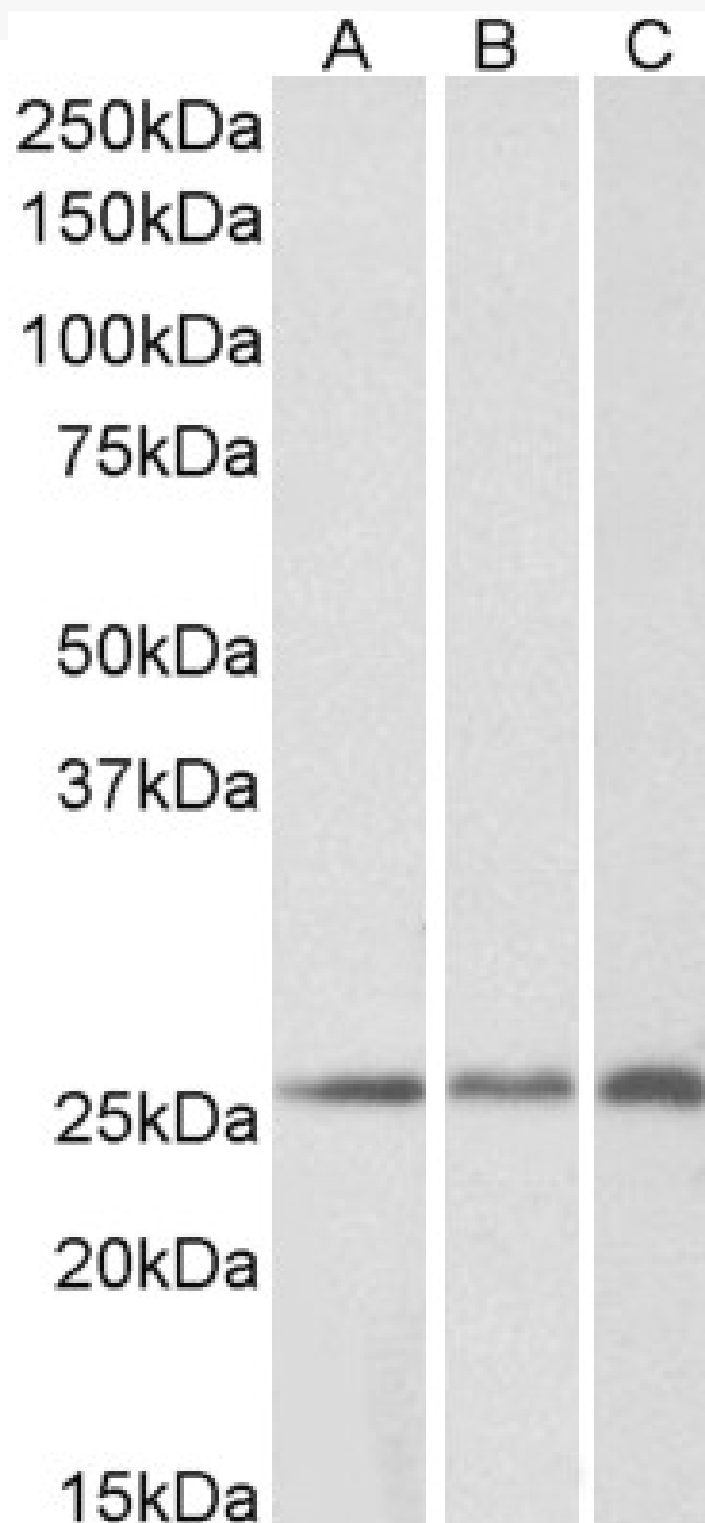


GOAT ANTI-CRP2 / CSRP2 ANTIBODY

SKU: EB08182



SPECIFICATIONS

Formulation	Supplied at 0.5 mg/ml in Tris saline, 0.02% sodium azide, pH7.3 with 0.5% bovine serum albumin.
Unit Size	100 µg
Storage	Aliquot and store at -20°C. Minimize freezing and thawing.
Instructions	
Synonym /	
Alias	LIM domain only 5, smooth muscle SmLIM LMO5 cysteine and glycine-rich protein 2 CSRP2 CRP2
Names	
Accession ID	NP_001312.1
Blocking Peptide	EBP08182
Immunogen	Peptide with sequence C-ERLGIKPESVQP, from the internal region of the protein sequence according to NP_001312.1.
Peptide Sequence	C-ERLGIKPESVQP
Purification Method	Purified from goat serum by ammonium sulphate precipitation followed by antigen affinity chromatography using the immunizing peptide.
Shipping Instructions	Refrigerated
Predicted Species	Human, Mouse, Rat, Horse
Reactive Species	Human, Mouse, Rat
Human Gene ID	1466
Mouse Gene ID	13008
Product Grade	https://prod-vector-labs-pimcore-assets.s3.us-east-1.amazonaws.com/assets/products/image/elite_medium.png
IHC Results	In paraffin embedded Human Lung shows staining of the endothelial cells of a blood vessel. Recommended concentration: 3-6µg/ml.
ELISA	
Detection Limit	Antibody detection limit dilution 1:64000.
Western Blot	Approx 26kDa band observed in Human, Mouse and Rat Kidney lysates (calculated MW of 21.0kDa according to NP_001312.1). The observed molecular weight corresponds to earlier findings in literature with different antibodies (Huber et al, J Biol Chem. 2000 Feb 25;275(8):5504-11; PMID: 10681529). In transfected HEK293 transiently expressing CRP2 a band of approx. 26kDa is observed. This band is not observed in the non-transfected HEK293. Recommended concentration: 0.1-0.3µg/ml. Primary incubation was 1 hour.
Application Type	Pep-ELISA, WB, IHC

DOCUMENTS

- [Data Sheet](#)

GALLERY IMAGES

