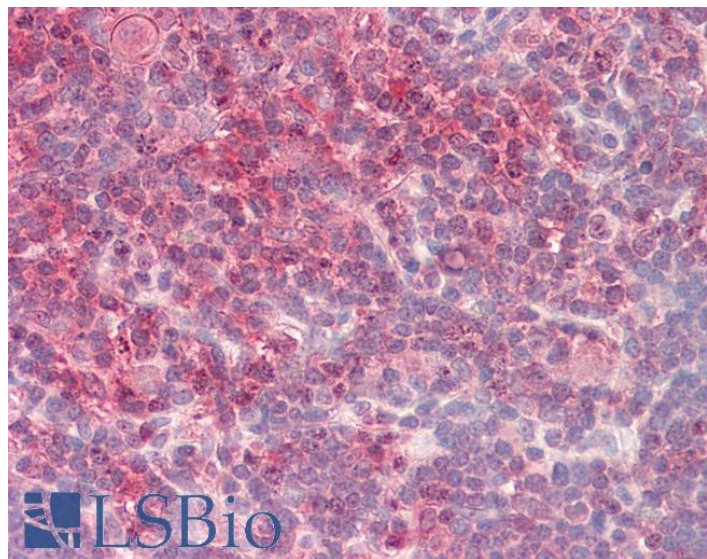


GOAT ANTI-CRTC2 / TORC2 (AA 83-96) ANTIBODY

SKU: EB10706



SPECIFICATIONS

Formulation Supplied at 0.5 mg/ml in Tris saline, 0.02% sodium azide, pH7.3 with 0.5% bovine serum albumin.

Unit Size 100 µg

Storage Instructions Aliquot and store at -20°C. Minimize freezing and thawing.

Synonym / Alias Names CRTC2| CREB regulated transcription coactivator 2| RP11-422P24.6| TORC2| CREB-regulated transcription coactivator 2| OTTHUMP00000035255| TORC-2| transducer of CREB protein 2| transducer of regulated cAMP response element-binding protein (CREB) 2

Accession ID NP_859066.1

Blocking Peptide EBP10706

Immunogen Peptide with sequence C-EFQSPLHSPLDSSR, from the internal region of the protein sequence according to NP_859066.1.

Peptide Sequence C-EFQSPLHSPLDSSR

Purification Method Purified from goat serum by ammonium sulphate precipitation followed by antigen affinity chromatography using the immunizing peptide.

Shipping Instructions Refrigerated

Predicted Species	Human, Mouse, Rat, Dog, Pig, Cow
Reactive Species	Human
Human Gene ID	200186
Mouse Gene ID	74343
Rat Gene ID	310615
Product Grade	https://prod-vector-labs-pimcore-assets.s3.us-east-1.amazonaws.com/assets/products/image/elite_medium.png
IHC Results	Paraffin embedded Human Thymus. Recommended concentration: 3.75µg/ml.
ELISA	
Detection Limit	Antibody detection limit dilution 1:32000.
Western Blot	Approx 85kDa band observed in lysates of cell line Jurkat (calculated MW of 73.3kDa according to NP_859066.1). Recommended concentration: 0.3-1µg/ml. Primary incubation was 1 hour.
Application Type	Pep-ELISA, WB, IHC

DOCUMENTS

- [Data Sheet](#)

GALLERY IMAGES

