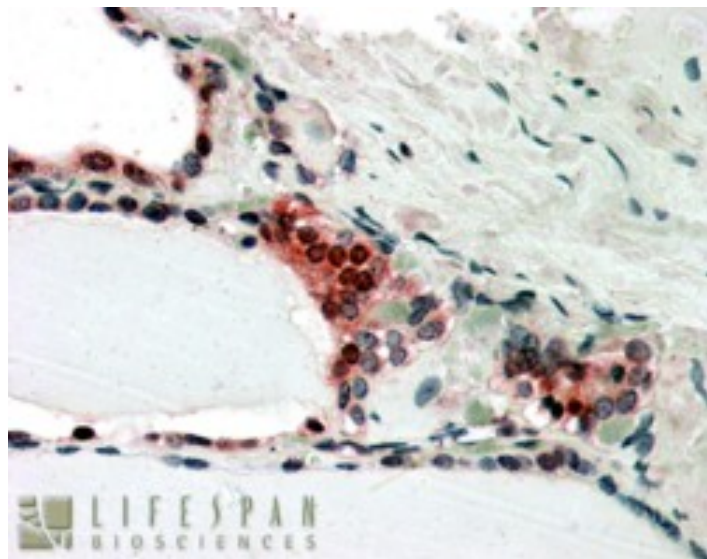


GOAT ANTI-CSN2 / TRIP15 ANTIBODY

SKU: EB05953



SPECIFICATIONS

Formulation Supplied at 0.5 mg/ml in Tris saline, 0.02% sodium azide, pH7.3 with 0.5% bovine serum albumin.

Unit Size 100 µg

Storage Instructions Aliquot and store at -20°C. Minimize freezing and thawing.

Synonym / Alias Names JAB1-containing signalosome subunit 2|COP9 signalosome complex subunit 2|ALIEN|COP9, subunit 2|COP9 constitutive photomorphogenic homolog subunit 2 (Arabidopsis)|thyroid receptor interacting protein 15|COP9 constitutive photomorphogenic homolog subunit 2|SGN2|thyroid receptor interacting protein 15|CSN2|COPS2|TRIP15|COPS2

Accession ID NP_004227.1; NP_001137359.1

Blocking Peptide EBP05953

Immunogen Peptide with sequence C-LNSLNQAVVSKLA, from the C Terminus of the protein sequence according to NP_004227.1; NP_001137359.1.

Peptide Sequence C-LNSLNQAVVSKLA

Purification Method Purified from goat serum by ammonium sulphate precipitation followed by antigen affinity chromatography using the immunizing peptide.

| | |
|------------------------------|---|
| Shipping Instructions | Refrigerated |
| Predicted Species | Human, Mouse, Rat, Dog, Cow |
| Reactive Species | Human, Mouse |
| Human Gene ID | 9318 |
| Mouse Gene ID | 12848 |
| Rat Gene ID | 261736 |
| Product Grade | https://prod-vector-labs-pimcore-assets.s3.us-east-1.amazonaws.com/assets/products/image/elite_medium.png |
| IHC Results | In paraffin embedded Human Thyroid Gland shows nuclear and cytoplasm staining in activated epithelial cells Recommended concentration: 3-5µg/ml. |
| ELISA | |
| Detection Limit | Antibody detection limit dilution 1:16000. |
| Western Blot | Approx. 48kDa band observed in lysates of Mouse pituitary cell line NIH3T3 (calculated MW of 51.6kDa according to NP_004227.1). Recommended concentration: 1-3µg/ml. |
| Application Type | Pep-ELISA, WB, IHC |

DOCUMENTS

- [Data Sheet](#)

GALLERY IMAGES

