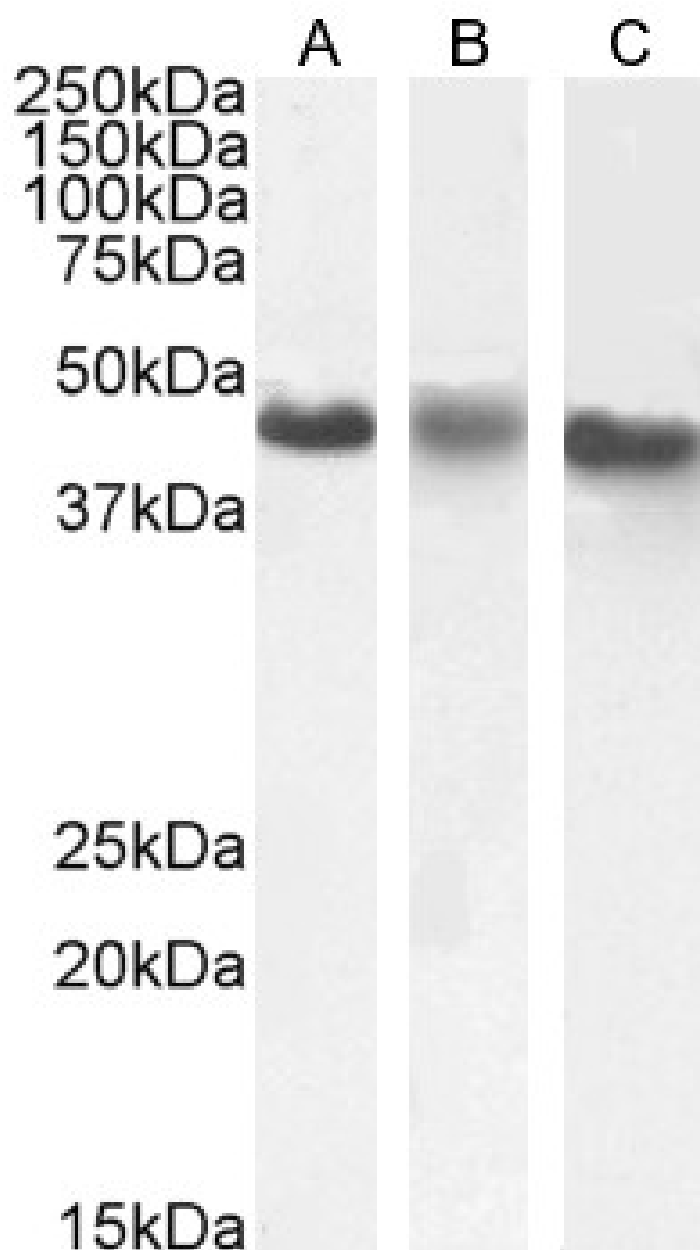


GOAT ANTI-CSNK1E ANTIBODY

SKU: EB07758



SPECIFICATIONS

Formulation	Supplied at 0.5 mg/ml in Tris saline, 0.02% sodium azide, pH7.3 with 0.5% bovine serum albumin.
Unit Size	100 µg
Storage	
Instructions	Aliquot and store at -20°C. Minimize freezing and thawing.
Synonym / Alias	casein kinase I epsilon casein kinase 1 epsilon OTTHUMP00000063263 OTTHUMP00000063258 CKI-epsilon MGC10398 HCKIE RP1-5O6.1 casein kinase 1, epsilon CSNK1E
Names	
Usage Summary	Immunofluorescence: Strong expression of the protein seen in the cytoplasm of HeLa and A431 cells. Recommended concentration: 10µg/ml. Flow Cytometry: Flow cytometric analysis of A431 cells. Recommended concentration: 10ug/ml.
Accession ID	NP_001276841.1
Blocking Peptide	EBP07758
Immunogen	Peptide with sequence C-PASQTSVPFDHLGK, from the C Terminus of the protein sequence according to NP_001276841.1.
Peptide Sequence	C-PASQTSVPFDHLGK
Purification Method	Purified from goat serum by ammonium sulphate precipitation followed by antigen affinity chromatography using the immunizing peptide.
Shipping Instructions	Refrigerated
Predicted Species	Human, Mouse, Rat, Dog
Reactive Species	Human
Human Gene ID	1454
Mouse Gene ID	27373
Rat Gene ID	58822
Product Grade	https://prod-vector-labs-pimcore-assets.s3.us-east-1.amazonaws.com/assets/products/image/elite_plus_medium.png
IHC Results	Paraffin embedded Human Tonsil. Recommended concentration: 5µg/ml.
ELISA	
Detection Limit	Antibody detection limit dilution 1:32000.
Western Blot	Approx 48kDa band observed in nuclear lysates of cell lines A431and HeLa, and approx 45kDa in nuclear lysates of cell line K562 (calculated MW of 47.3kDa according to NP_001276841.1). Recommended concentration: 0.3-1µg/ml. Primary incubation 1 hour at room temperature.
Application Type	Pep-ELISA, WB, IHC, IF, FC

DOCUMENTS

- [Data Sheet](#)

GALLERY IMAGES

