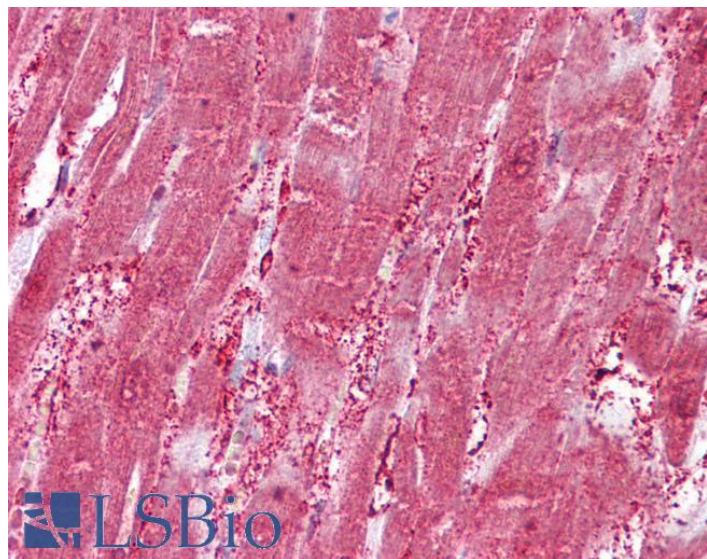


# GOAT ANTI-CSRP3 ANTIBODY

**SKU:** EB09104



## SPECIFICATIONS

**Formulation** Supplied at 0.5 mg/ml in Tris saline, 0.02% sodium azide, pH7.3 with 0.5% bovine serum albumin.

**Unit Size** 100 µg

**Storage Instructions** Aliquot and store at -20°C. Minimize freezing and thawing.

**Synonym / Alias Names** muscle LIM protein|cysteine-rich protein 3|cysteine and glycine-rich protein 3|cardiac LIM protein|cardiac LIM domain protein|LIM domain only 4|MLP|MGC61993|MGC14488|LMO4|CRP3|CMD1M|CLP|cysteine and glycine-rich protein 3 (cardiac LIM protein)|CSRP3

**Accession ID** NP\_003467.1

**Blocking Peptide** EBP09104

**Immunogen** Peptide with sequence CGKSLESTNVTDKD, from the internal region of the protein sequence according to NP\_003467.1.

**Peptide Sequence** CGKSLESTNVTDKD

**Purification Method** Purified from goat serum by ammonium sulphate precipitation followed by antigen affinity chromatography using the immunizing peptide.

**Shipping Instructions** Refrigerated

<b>Predicted Species</b>	Human, Mouse, Rat, Dog, Cow
<b>Reactive Species</b>	Human, Mouse, Rat
<b>Human Gene ID</b>	8048
<b>Mouse Gene ID</b>	13009
<b>Rat Gene ID</b>	117505
<b>Product Grade</b>	<a href="https://prod-vector-labs-pimcore-assets.s3.us-east-1.amazonaws.com/assets/products/image/elite_medium.png">https://prod-vector-labs-pimcore-assets.s3.us-east-1.amazonaws.com/assets/products/image/elite_medium.png</a>
<b>IHC Results</b>	Paraffin embedded Human Skeletal Muscle and Heart. Recommended concentration: 2.5µg/ml.
<b>ELISA</b>	
<b>Detection Limit</b>	Antibody detection limit dilution 1:32000.
<b>Western Blot</b>	Approx. 20kDa band observed in Human, Mouse and Rat Heart lysates (calculated MW of 21.0kDa according to Human NP_003467.1 and 20.8kDa according to Rat NP_476485.1). Recommended concentration: 0.01-0.03µg/ml. Primary incubation was 1 hour.
<b>Application Type</b>	Pep-ELISA, WB, IHC

## DOCUMENTS

- [Data Sheet](#)

## GALLERY IMAGES

