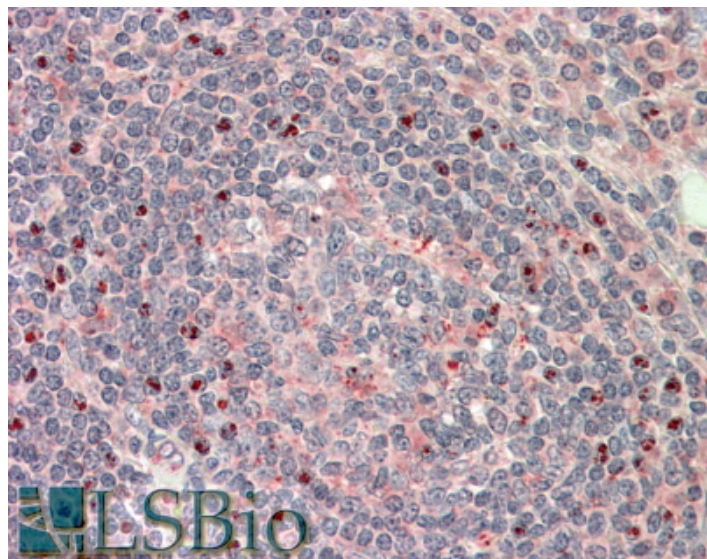


GOAT ANTI-CTDSP1 ANTIBODY

SKU: EB06849



SPECIFICATIONS

Formulation Supplied at 0.5 mg/ml in Tris saline, 0.02% sodium azide, pH7.3 with 0.5% bovine serum albumin.

Unit Size 100 µg

Storage Instructions Aliquot and store at -20°C. Minimize freezing and thawing.

Synonym / Alias Names CTDSP1|SCP1|NLIIF|CTD (carboxy-terminal domain, RNA polymerase II, polypeptide A) small phosphatase 1|small CTD phosphatase 1|nuclear LIM interactor-interacting factor|Synaptonemal Complex Protein 1

Accession ID NP_067021.1; NP_872580.1; NP_001193807.1

Blocking Peptide EBP06849

Immunogen Peptide with sequence EAKAQDSDKIC, from the internal region of the protein sequence according to NP_067021.1; NP_872580.1; NP_001193807.1.

Product Comments This antibody is expected to recognize all three reported isoforms (NP_067021.1; NP_872580.1; NP_001193807.1).

Peptide Sequence EAKAQDSDKIC

Purification Method Purified from goat serum by ammonium sulphate precipitation followed by antigen affinity chromatography using the immunizing peptide.

Shipping Instructions	Refrigerated
Predicted Species	Human, Mouse, Rat, Dog, Cow
Reactive Species	Human, Mouse
Human Gene ID	58190
Mouse Gene ID	227292
Rat Gene ID	363249
Product Grade	https://prod-vector-labs-pimcore-assets.s3.us-east-1.amazonaws.com/assets/products/image/elite_medium.png
IHC Results	In paraffin embedded Human Tonsil shows nucleolar staining in select cells outside the follicles. Recommended concentration, 5-10µg/ml.
ELISA	
Detection Limit	Antibody detection limit dilution 1:16000.
Western Blot	Approx 30kDa band observed in Mouse Testis lysates (calculated MW of 29.3kDa according to Mouse NP_694728.1). Recommended concentration: 0.1-0.3µg/ml.
Application Type	Pep-ELISA, WB, IHC

DOCUMENTS

- [Data Sheet](#)

GALLERY IMAGES

