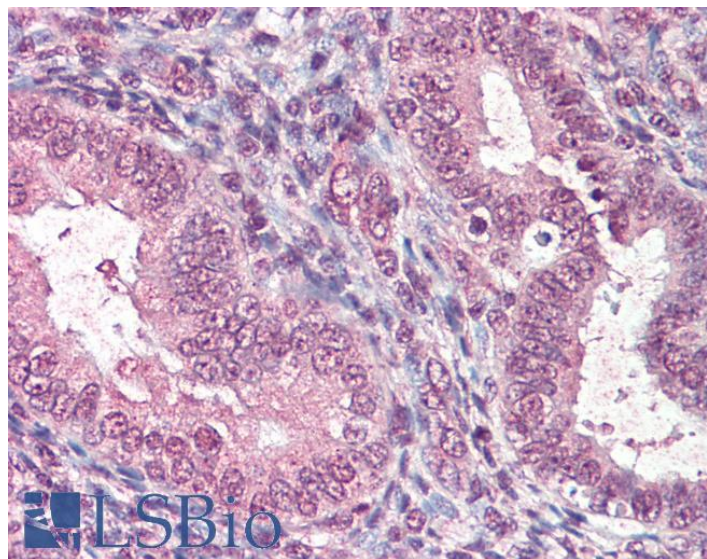


GOAT ANTI-CTDSP1 ANTIBODY

SKU: EB07737



SPECIFICATIONS

Formulation Supplied at 0.5 mg/ml in Tris saline, 0.02% sodium azide, pH7.3 with 0.5% bovine serum albumin.

Unit Size 100 µg

Storage Instructions Aliquot and store at -20°C. Minimize freezing and thawing.

Synonym / Alias Names CTDSP1|CTD (carboxy-terminal domain, RNA polymerase II, polypeptide A) small phosphatase 1|NLIIF|SCP1|nuclear LIM interactor-interacting factor|small CTD phosphatase 1

Accession ID NP_067021.1; NP_872580.1

Blocking Peptide EBP07737

Immunogen Peptide with sequence C-RGKGDQKSAASQK, from the internal region of the protein sequence according to NP_067021.1; NP_872580.1.

Product Comments This antibody is expected to recognise both reported isoforms (NP_067021.1 and NP_872580.1).

Peptide Sequence C-RGKGDQKSAASQK

Purification Method Purified from goat serum by ammonium sulphate precipitation followed by antigen affinity chromatography using the immunizing peptide.

Shipping Instructions	Refrigerated
Predicted Species	Human, Mouse, Rat, Dog
Reactive Species	Human
Human Gene ID	58190
Mouse Gene ID	227292
Rat Gene ID	363249
Product Grade	https://prod-vector-labs-pimcore-assets.s3.us-east-1.amazonaws.com/assets/products/image/elite_medium.png
IHC Results	Paraffin embedded Human Uterus. Recommended concentration: 5µg/ml.
ELISA	
Detection Limit	Antibody detection limit dilution 1:32000.
Western Blot	Preliminary experiments gave an approx 60kDa band in Human Spleen, Lung and Placenta lysates after 0.3µg/ml antibody staining. Please note that currently we cannot find an explanation in the literature for the band we observe given the calculated size of 29.2kDa according to NP_067021.1 and 29.1kDa according to NP_872580.1. The 60kDa band was successfully blocked by incubation with the immunizing peptide.
Application Type	Pep-ELISA, IHC

DOCUMENTS

- [Data Sheet](#)

GALLERY IMAGES

