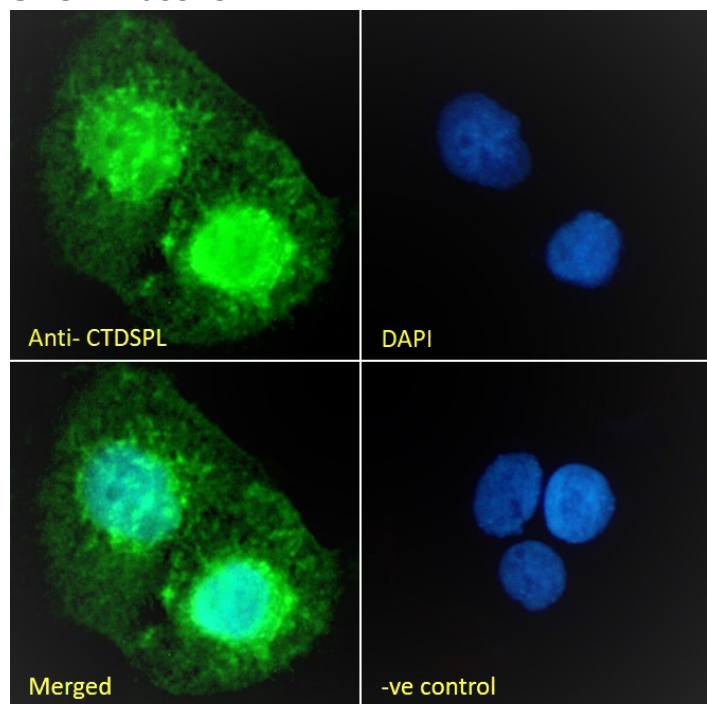


GOAT ANTI-CTDSPL ANTIBODY

SKU: EB08525



SPECIFICATIONS

Formulation Supplied at 0.5 mg/ml in Tris saline, 0.02% sodium azide, pH7.3 with 0.5% bovine serum albumin.

Unit Size 100 µg

Storage Instructions Aliquot and store at -20°C. Minimize freezing and thawing.

Synonym / Alias Names small CTD phosphatase 3|SCP3|PSR1|HYA22|C3orf8|CTD (carboxy-terminal domain, RNA polymerase II, polypeptide A) small phosphatase-like|CTDSPL

Usage Summary **Immunofluorescence:** Strong expression of the protein seen in the nuclei and vesicles of A431 cells. Recommended concentration: 10µg/ml. **Flow Cytometry:** Flow cytometric analysis of A431 cells. Recommended concentration: 10ug/ml.

Accession ID NP_001008393.1; NP_005799.2

Blocking Peptide EBP08525

Immunogen	Peptide with sequence QCNVSLKKQRSRS, from the internal region of the protein sequence according to NP_001008393.1; NP_005799.2.
Product Comments	This antibody is expected to recognise both isoforms (NP_001008393.1; NP_005799.2).
Peptide Sequence	QCNVSLKKQRSRS
Purification Method	Purified from goat serum by ammonium sulphate precipitation followed by antigen affinity chromatography using the immunizing peptide.
Shipping Instructions	Refrigerated
Predicted Species	Human, Dog
Reactive Species	Human
Human Gene ID	10217
Product Grade	https://prod-vector-labs-pimcore-assets.s3.us-east-1.amazonaws.com/assets/products/image/elite_medium.png
ELISA Detection Limit	Antibody detection limit dilution 1:32000.
Western Blot	Preliminary testing showed a band at approx 28kDa in nuclear lysate of cell lines A431 and HeLa, after 1-2µg/ml antibody staining (calculated Mwt of 29.9kDa according to NP_005799.2). Primary incubation 1 hour at room temperature.
Application Type	Pep-ELISA, IF, FC

DOCUMENTS

- [Data Sheet](#)

GALLERY IMAGES

