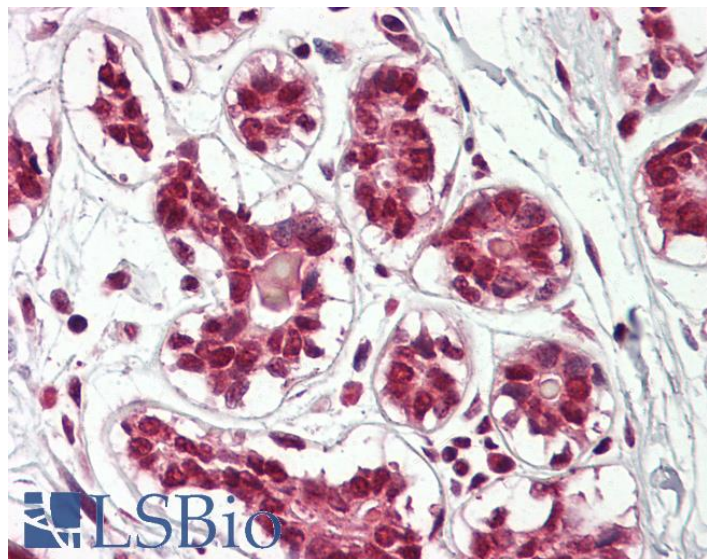


GOAT ANTI-CUL2 ANTIBODY

SKU: EB10058



SPECIFICATIONS

Formulation Supplied at 0.5 mg/ml in Tris saline, 0.02% sodium azide, pH7.3 with 0.5% bovine serum albumin.

Unit Size 100 µg

Storage Instructions Aliquot and store at -20°C. Minimize freezing and thawing.

Synonym /

Alias Names CUL2|OTTHUMP00000019437|MGC131970|cullin 2

Accession ID NP_003582.2

Blocking Peptide EBP10058

Immunogen Peptide with sequence C-QYIERSQASADE, from the C Terminus of the protein sequence according to NP_003582.2.

Peptide Sequence C-QYIERSQASADE

Purification Method Purified from goat serum by ammonium sulphate precipitation followed by antigen affinity chromatography using the immunizing peptide.

Shipping Instructions Refrigerated

Predicted Species	Human, Mouse, Rat, Dog, Cow
Reactive Species	Human, Mouse
Human Gene ID	8453
Mouse Gene ID	71745
Rat Gene ID	361258
Product Grade	https://prod-vector-labs-pimcore-assets.s3.us-east-1.amazonaws.com/assets/products/image/elite_medium.png
IHC Results	Paraffin embedded Human Breast. Recommended concentration: 3.75µg/ml.
ELISA	
Detection Limit	Antibody detection limit dilution 1:8000.
Western Blot	Approx 100kDa band observed in lysates of cell line NIH3T3 (calculated MW of 87.0kDa according to Human NP_003582.2 and of 86.9kDa according to Mouse NP_083678.2). Recommended concentration: 1-3µg/ml. Primary incubation was 1 hour.
Application Type	Pep-ELISA, WB, IHC

DOCUMENTS

- [Data Sheet](#)

GALLERY IMAGES

