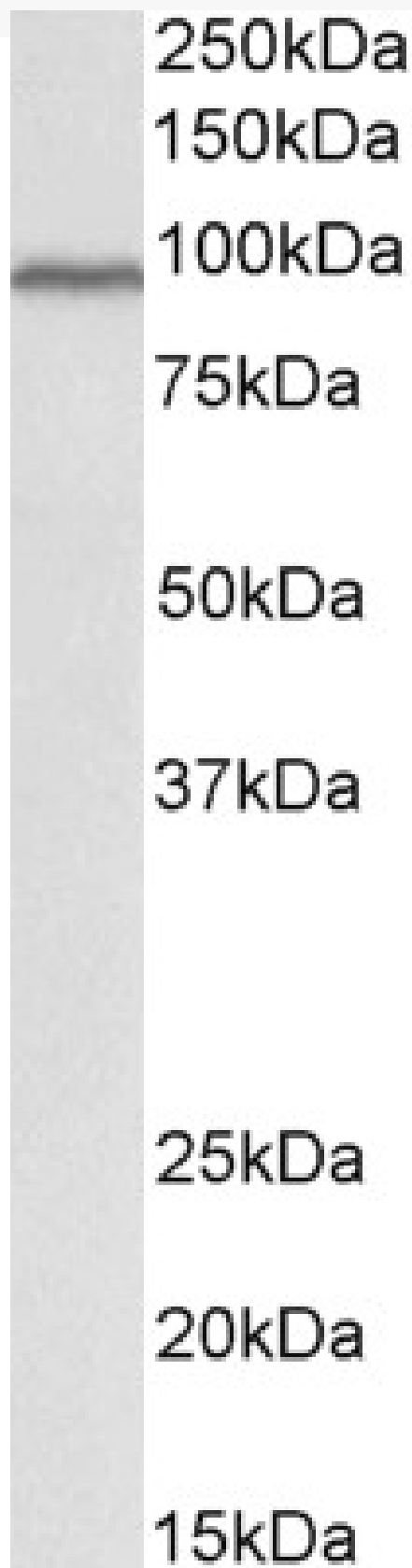


GOAT ANTI-CULLIN 3 ANTIBODY

SKU: EB08903



SPECIFICATIONS

Formulation Supplied at 0.5 mg/ml in Tris saline, 0.02% sodium azide, pH7.3 with 0.5% bovine serum albumin.

Unit Size 100 µg

Storage Instructions Aliquot and store at -20°C. Minimize freezing and thawing.

Synonym /

Alias KIAA0617|cullin 3|CUL3

Names

Accession ID NP_003581.1

Blocking Peptide EBP08903

Immunogen Peptide with sequence C-AQVTGSNTRKHILQ, from the internal region of the protein sequence according to NP_003581.1.

Peptide Sequence C-AQVTGSNTRKHILQ

Purification Method Purified from goat serum by ammonium sulphate precipitation followed by antigen affinity chromatography using the immunizing peptide.

Shipping Instructions Refrigerated

Predicted Species Human, Mouse, Rat

Reactive Species Human

Human Gene ID 8452

Product Grade https://prod-vector-labs-pimcore-assets.s3.us-east-1.amazonaws.com/assets/products/image/elite_medium.png

ELISA

Detection Limit Antibody detection limit dilution 1:2000.

Western Blot Approx 90kDa band observed in Human Heart lysates (calculated MW of 88.9kDa according to NP_003581.1). Recommended concentration: 1-3µg/ml.

Application Type Pep-ELISA, WB

DOCUMENTS

- [Data Sheet](#)

GALLERY IMAGES

