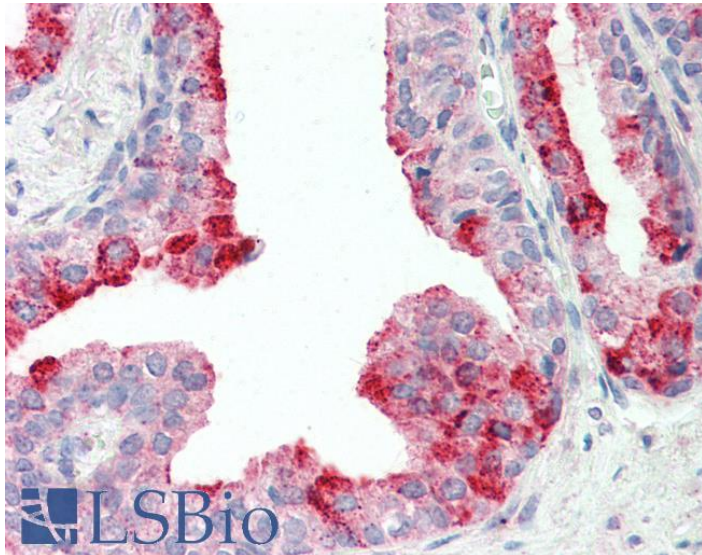




GOAT ANTI-CUTA PROTEIN ANTIBODY

SKU: EB12230



SPECIFICATIONS

Formulation	Supplied at 0.5 mg/ml in Tris saline, 0.02% sodium azide, pH7.3 with 0.5% bovine serum albumin.
Unit Size	100 µg
Storage	Aliquot and store at -20°C. Minimize freezing and thawing.
Instructions	
Synonym / Alias	CUTA cutA divalent cation tolerance homolog (E. coli) ACHAP C6orf82 acetylcholinesterase-associated protein brain acetylcholinesterase putative membrane anchor divalent cation tolerant protein CUTA protein
Names	CutA
Accession ID	NP_001014433.1; NP_057005.1; NP_001014840.1
Blocking Peptide	EBP12230
Immunogen	Peptide with sequence C-QVTESVSDSIT, from the C Terminus of the protein sequence according to NP_001014433.1; NP_057005.1; NP_001014840.1.
Product Comments	This antibody is expected to recognize all reported isoforms (NP_001014433.1; NP_057005.1; NP_001014840.1). Reported variants represent identical protein: NP_001014837.1, NP_001014838.1, NP_057005.1.
Peptide Sequence	C-QVTESVSDSIT



Purification Method	Purified from goat serum by ammonium sulphate precipitation followed by antigen affinity chromatography using the immunizing peptide.
Shipping Instructions	Refrigerated
Predicted Species	Human
Reactive Species	Human
Human Gene ID	51596
Product Grade	https://prod-vector-labs-pimcore-assets.s3.us-east-1.amazonaws.com/assets/products/image/elite_medium.png
IHC Results	Paraffin embedded Human Prostate. Recommended concentration: 5µg/ml.
ELISA Detection Limit	Antibody detection limit dilution 1:64000.
Western Blot	Approx 16kDa band observed in lysates of cell line Kelly (calculated MW of 16.8kDa according to NP_057005.1). Recommended concentration: 1-3µg/ml. Primary incubation was 1 hour.
Application Type	Pep-ELISA, WB, IHC

DOCUMENTS

- [Data Sheet](#)

GALLERY IMAGES

