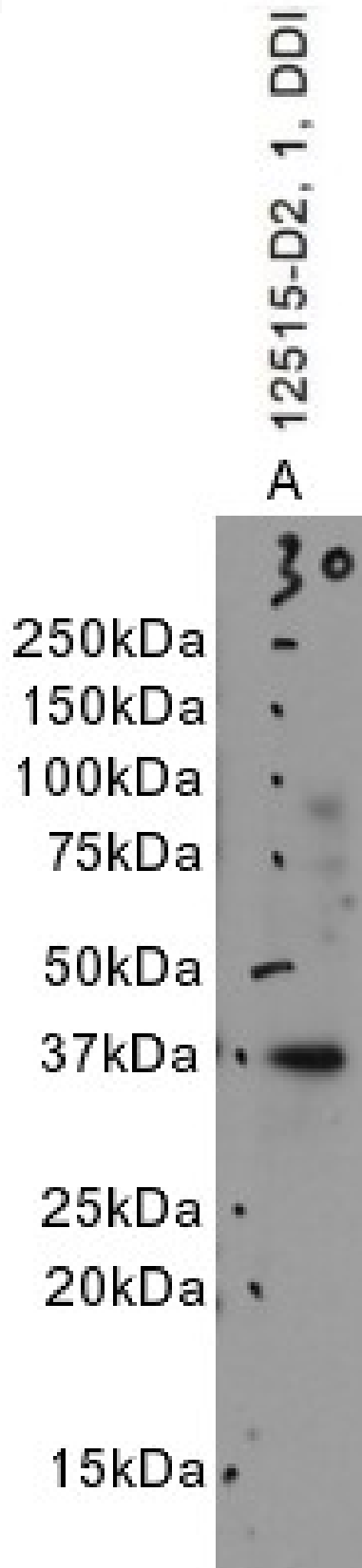


# GOAT ANTI-CX3CR1 (AA34-47) ANTIBODY

**SKU:** EB12515



## SPECIFICATIONS

<b>Formulation</b>	Supplied at 0.5 mg/ml in Tris saline, 0.02% sodium azide, pH7.3 with 0.5% bovine serum albumin.
<b>Unit Size</b>	100 µg
<b>Storage Instructions</b>	Aliquot and store at -20°C. Minimize freezing and thawing.
<b>Synonym / Alias Names</b>	beta chemokine receptor-like 1 G-protein coupled receptor 13 G protein-coupled receptor 13 CX3C chemokine receptor 1 CMK-BRL1 CMK-BRL-1 C-X3-C CKR-1 V28 GPRV28 GPR13 CMKDR1 CMKBRL1 CCRL1 chemokine (C-X3-C motif) receptor 1 CX3CR1
<b>Accession ID</b>	NP_001164645.1; NP_001328.1
<b>Blocking Peptide</b>	EBP12515
<b>Immunogen</b>	Peptide with sequence C-DQFPESVTENFEYD, from the internal region (near N terminus) of the protein sequence according to NP_001164645.1; NP_001328.1.
<b>Product Comments</b>	This antibody is expected to recognize both reported isoforms (NP_001164645.1; NP_001328.1). Reported variants represent identical protein: NP_001164643.1, NP_001328.1, NP_001164642.1.
<b>Peptide Sequence</b>	C-DQFPESVTENFEYD
<b>Purification Method</b>	Purified from goat serum by ammonium sulphate precipitation followed by antigen affinity chromatography using the immunizing peptide.
<b>Shipping Instructions</b>	Refrigerated
<b>Predicted Species</b>	Human
<b>Reactive Species</b>	Human
<b>Human Gene ID</b>	1524
<b>Product Grade</b>	<a href="https://prod-vector-labs-pimcore-assets.s3.us-east-1.amazonaws.com/assets/products/image/elite_medium.png">https://prod-vector-labs-pimcore-assets.s3.us-east-1.amazonaws.com/assets/products/image/elite_medium.png</a>
<b>ELISA Detection Limit</b>	Antibody detection limit dilution 1:128000.
<b>Western Blot</b>	Approx. 37kDa band observed in lysates of cell line Daudi (calculated MW of 40.4kDa according to NP_001328.1). Recommended concentration: 1-2µg/ml. Primary incubation 1 hour at room temperature.
<b>Application Type</b>	Pep-ELISA, WB

## DOCUMENTS

- [Data Sheet](#)

## GALLERY IMAGES

