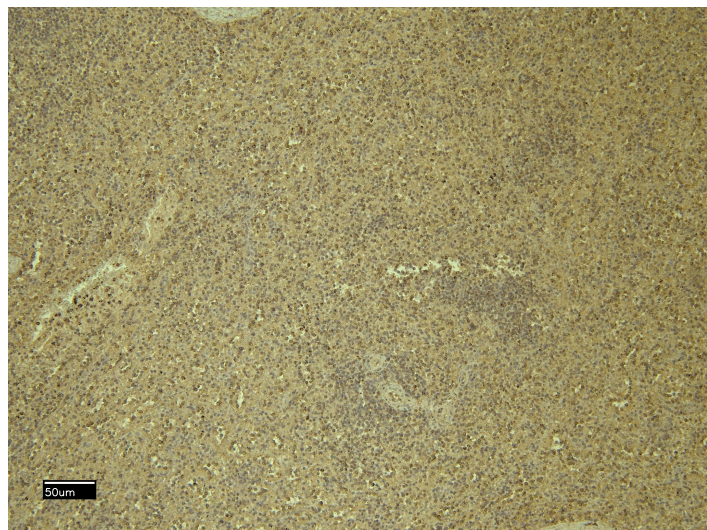


GOAT ANTI-CXCR3 / GPR9 ANTIBODY

SKU: EB07201



SPECIFICATIONS

Formulation	Supplied at 0.5 mg/ml in Tris saline, 0.02% sodium azide, pH7.3 with 0.5% bovine serum albumin.
Unit Size	100 µg
Storage Instructions	Aliquot and store at -20°C. Minimize freezing and thawing.
Synonym / Alias Names	chemokine (C-X-C) receptor 3 Mig receptor IP10 receptor G protein-coupled receptor 9 MigR Mig-R IP10-R IP10 GPR9 CMKAR3 CKR-L2 CD183 HGNC:4540 chemokine (C-X-C motif) receptor 3 CXCR3
Usage Summary	Immunofluorescence: Strong expression of the protein seen in the membranes of A431 and HepG2 cells. Recommended concentration: 10µg/ml. Flow Cytometry: Flow cytometric analysis of HepG2 cells. Recommended concentration: 10ug/ml.
Accession ID	NP_001495.1; NP_001136269.1
Blocking Peptide	EBP07201
Immunogen	Peptide with sequence C-RRDSSWSETSEA, from the C Terminus of the protein sequence according to NP_001495.1; NP_001136269.1.
Peptide Sequence	C-RRDSSWSETSEA
Purification Method	Purified from goat serum by ammonium sulphate precipitation followed by antigen affinity chromatography using the immunizing peptide.

Shipping Instructions	Refrigerated
Predicted Species	Human, Mouse, Rat
Reactive Species	Human
Human Gene ID	2833
Mouse Gene ID	12766
Rat Gene ID	84475
Product Grade	https://prod-vector-labs-pimcore-assets.s3.us-east-1.amazonaws.com/assets/products/image/elite_plus_medium.png
IHC Results	Paraffin embedded Human Spleen. Recommended concentration: 6-8µg/ml.
ELISA	
Detection Limit	Antibody detection limit dilution 1:64000.
Western Blot	Preliminary experiments showed a band at approx 55-60kDa in Human Tonsil and Mouse Spleen lysates after 1µg/ml antibody staining. This band was successfully blocked by incubation with the immunizing peptide. Primary incubation 1 hour at room temperature. Please note we cannot currently find an explanation in the literature for this band, given the calculated size of 45.5kDa according to NP_001136269.1
Application Type	Pep-ELISA, IF, IHC, FC

DOCUMENTS

- [Data Sheet](#)

GALLERY IMAGES

