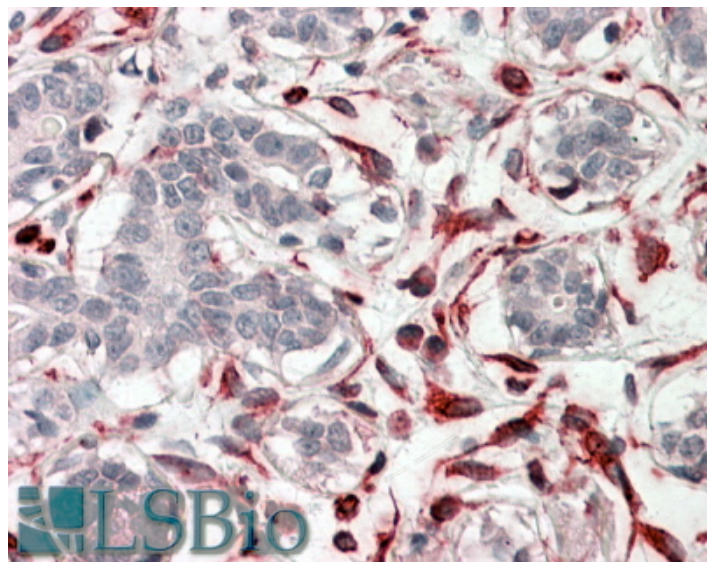


GOAT ANTI-CXXC4 ANTIBODY

SKU: EB09211



SPECIFICATIONS

Formulation	Supplied at 0.5 mg/ml in Tris saline, 0.02% sodium azide, pH7.3 with 0.5% bovine serum albumin.
Unit Size	100 µg
Storage Instructions	Aliquot and store at -20°C. Minimize freezing and thawing.
Synonym / Alias Names	CXXC4 CXXC finger 4 IDAX MGC149872 Dvl-binding protein IDAX (inhibition of the Dvl and Axin complex) inhibition of the Dvl and Axin complex
Accession ID	NP_079488.1
Blocking Peptide	EBP09211
Immunogen	Peptide with sequence C-GTSLERTPVPSAEA, from the C-Terminus (near) of the protein sequence according to NP_079488.1.
Peptide Sequence	C-GTSLERTPVPSAEA
Purification Method	Purified from goat serum by ammonium sulphate precipitation followed by antigen affinity chromatography using the immunizing peptide.
Shipping Instructions	Refrigerated

Predicted Species	Human, Mouse
Reactive Species	Human
Human Gene ID	80319
Mouse Gene ID	319478
Product Grade	https://prod-vector-labs-pimcore-assets.s3.us-east-1.amazonaws.com/assets/products/image/elite_medium.png
IHC Results	In paraffin embedded Human Breast shows cytoplasm staining in myoepithelial cells. Recommended concentration, 3-5µg/ml.
ELISA	
Detection Limit	Antibody detection limit dilution 1:32000.
Western Blot	Preliminary experiments in Human Brain (Cerebellum, Hippocampus) lysates gave no specific signal but low background (at antibody concentration up to 1µg/ml). We would appreciate any feedback from people in the field - have any results been reported with other antibodies/lysates?
Application Type	Pep-ELISA, IHC

DOCUMENTS

- [Data Sheet](#)

GALLERY IMAGES

