

# GOAT ANTI-CYB5R3 / DIA 1 (MOUSE) ANTIBODY

**SKU:** EB09614

250kDa

150kDa

100kDa

75kDa

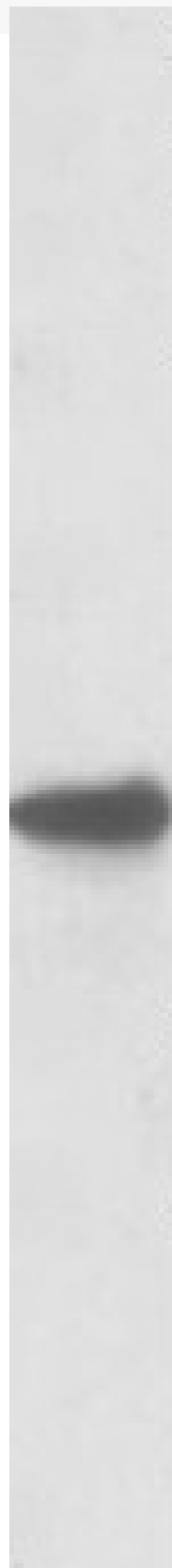
50kDa

37kDa

25kDa

20kDa

15kDa



## SPECIFICATIONS

<b>Formulation</b>	Supplied at 0.5 mg/ml in Tris saline, 0.02% sodium azide, pH7.3 with 0.5% bovine serum albumin.
<b>Unit Size</b>	100 µg
<b>Storage</b>	Aliquot and store at -20°C. Minimize freezing and thawing.
<b>Instructions</b>	
<b>Synonym / Alias</b>	diaphorase 1 (NADH) diaphorase 1 NADH-cytochrome b5 reductase WU:Cyb5r3 WU:AL591952.1-003 WU:AL591952.1-002 WU:AL591952.1-001 Dia1 Dia-1 C85115 2500002N19Rik 0610016L08Rik cytochrome b5 reductase 3 Cyb5r3
<b>Names</b>	b5 reductase 3 Cyb5r3
<b>Accession ID</b>	NP_084063.1
<b>Blocking Peptide</b>	EBP09614
<b>Immunogen</b>	Peptide with sequence PNLERVGHPKERC, from the C Terminus of the protein sequence according to NP_084063.1.
<b>Peptide Sequence</b>	PNLERVGHPKERC
<b>Purification Method</b>	Purified from goat serum by ammonium sulphate precipitation followed by antigen affinity chromatography using the immunizing peptide.
<b>Shipping Instructions</b>	Refrigerated
<b>Predicted Species</b>	Mouse, Rat, Dog, Cow
<b>Reactive Species</b>	Mouse
<b>Mouse Gene ID</b>	109754
<b>Rat Gene ID</b>	25035
<b>Product Grade</b>	<a href="https://prod-vector-labs-pimcore-assets.s3.us-east-1.amazonaws.com/assets/products/image/elite_medium.png">https://prod-vector-labs-pimcore-assets.s3.us-east-1.amazonaws.com/assets/products/image/elite_medium.png</a>
<b>ELISA</b>	
<b>Detection Limit</b>	Antibody detection limit dilution 1:32000.
<b>Western Blot</b>	Approx 35kDa band observed in Mouse Liver lysates as well as in mouse and rat brain lysates (calculated MW of 34.1kDa according to mouse NP_084063.1). Recommended concentration: 0.1-1µg/ml.
<b>Application Type</b>	Pep-ELISA, WB

## DOCUMENTS

- [Data Sheet](#)

## GALLERY IMAGES

