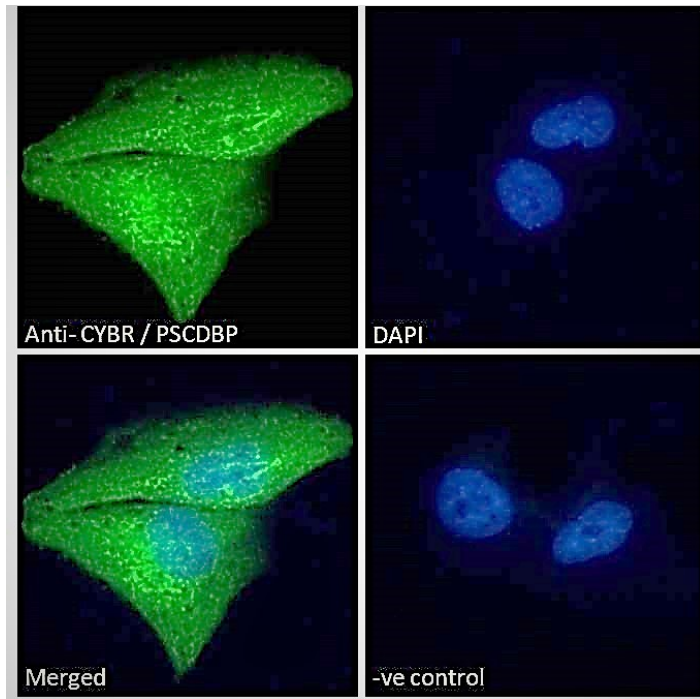




GOAT ANTI-CYBR / PSCDBP ANTIBODY

SKU: EB05366



SPECIFICATIONS

Formulation Supplied at 0.5 mg/ml in Tris saline, 0.02% sodium azide, pH7.3 with 0.5% bovine serum albumin.

Unit Size 100 µg

Storage Instructions Aliquot and store at -20°C. Minimize freezing and thawing.

Synonym / Alias Names pleckstrin homology, Sec7 and coiled/coil domains, binding protein|pleckstrin homology, Sec7 and coiled-coil domains, binding protein|cytohesin binder and regulator|cytohesin 1 interacting protein|pleckstrin homology, Sec7, and coiled-coil domains protein-binding protein|cytohesin-1 interacting protein|cytohesin binding protein HE|CASPIB3-1|HE|pleckstrin homology, Sec7 and coiled/coil domains, binding protein|CYBR|PSCDBP|CYTIP

Usage Summary Immunofluorescence: Expression of the protein seen in the cytoplasm and nucleus of A431 and U251 cells. Recommended concentration: 10µg/ml.

Accession ID NP_004279.3

Blocking Peptide EBP05366



Immunogen	Peptide with sequence SLQRLLQHSSNGN-C, from the N Terminus of the protein sequence according to NP_004279.3.
Peptide Sequence	SLQRLLQHSSNGN-C
Purification Method	Purified from goat serum by ammonium sulphate precipitation followed by antigen affinity chromatography using the immunizing peptide.
Shipping Instructions	Refrigerated
Predicted Species	Human, Dog, Pig
Reactive Species	Human
Human Gene ID	9595
Product Grade	https://prod-vector-labs-pimcore-assets.s3.us-east-1.amazonaws.com/assets/products/image/elite_medium.png
ELISA Detection Limit	Antibody detection limit dilution 1:16000.
Western Blot	Approx 38kDa band observed in lysates of cell line Jurkat and approx 40kDa in ysates of cell line MOLT4 (calculated MW of 40kDa according to NP_004279.3). Recommended concentration: 0.3-1µg/ml. Primary incubation 1 hour at room temperature.
Application Type	Pep-ELISA, WB, IF

DOCUMENTS

- [Data Sheet](#)

GALLERY IMAGES

