

GOAT ANTI-CYCLOPHILIN A / PPIA ANTIBODY

SKU: EB07066

250kDa

150kDa

100kDa

75kDa

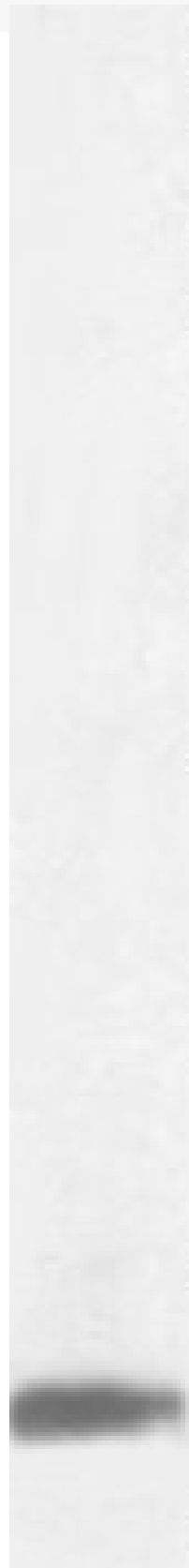
50kDa

37kDa

25kDa

20kDa

15kDa



SPECIFICATIONS

Formulation	Supplied at 0.5 mg/ml in Tris saline, 0.02% sodium azide, pH7.3 with 0.5% bovine serum albumin.
Unit Size	100 µg
Storage Instructions	Aliquot and store at -20°C. Minimize freezing and thawing.
Synonym / Alias Names	PPIase A MGC23397 MGC117158 rotamase peptidylprolyl isomerase A peptidyl-prolyl cis-trans isomerase A cyclosporin A-binding protein T cell cyclophilin MGC12404 CYPH CYPA HGNC:9253 peptidylprolyl isomerase A (cyclophilin A) PPIA
Accession ID	NP_066953.1
Blocking Peptide	EBP07066
Immunogen	Peptide with sequence C-ERFGSRNGKTSKK, from the internal region of the protein sequence according to NP_066953.1.
Product Comments	This product is expected to also recognise PPIAL (NP_001008741.1, GeneID: 388817) which is identical to PPIA (NP_066953.1).
Peptide Sequence	C-ERFGSRNGKTSKK
Purification Method	Purified from goat serum by ammonium sulphate precipitation followed by antigen affinity chromatography using the immunizing peptide.
Shipping Instructions	Refrigerated
Predicted Species	Human, Mouse, Rat, Dog, Pig, Cow
Reactive Species	Human
Human Gene ID	5478
Product Grade	https://prod-vector-labs-pimcore-assets.s3.us-east-1.amazonaws.com/assets/products/image/elite_medium.png
ELISA Detection Limit	Antibody detection limit dilution 1:8000.
Western Blot	Approx.18kDa band observed in Human Lymph Node lysates (calculated MW 18.0kDa according to NP_066953.1). Recommended Concentration: 0.1-0.3ug/ml. Primary incubation was 1 hour.
Application Type	Pep-ELISA, WB

DOCUMENTS

- [Data Sheet](#)

GALLERY IMAGES

