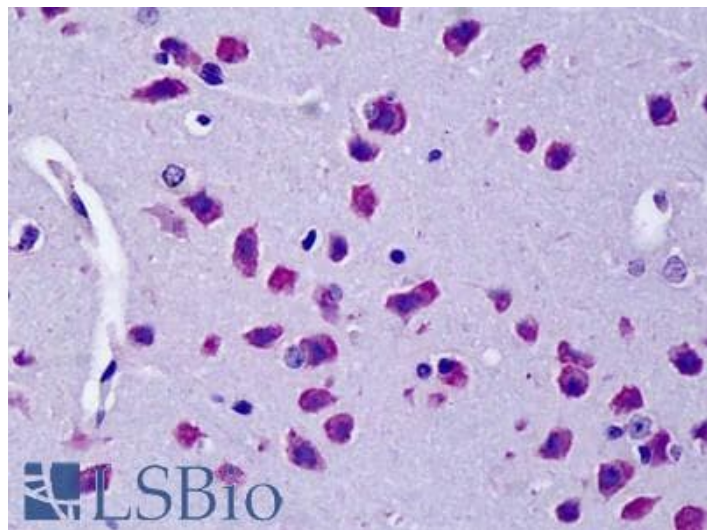


GOAT ANTI-CYLD (MOUSE) ANTIBODY

SKU: EB07719



SPECIFICATIONS

Formulation	Supplied at 0.5 mg/ml in Tris saline, 0.02% sodium azide, pH7.3 with 0.5% bovine serum albumin.
Unit Size	100 µg
Storage	Aliquot and store at -20°C. Minimize freezing and thawing.
Instructions	
Synonym /	ubiquitin carboxyl-terminal hydrolase
Alias	CYLD mKIAA0849 EAC CYLD1 CDMT C130039D01Rik 2900009M21Rik 2010013M14Rik cylindromatosis (turban
Names	tumor syndrome) CYLD
Accession	
ID	NP_775545.1
Blocking	
Peptide	EBP07719
Immunogen	Peptide with sequence C-DSQSKSKNPWYIDE, from the internal region of the protein sequence according to NP_775545.1.
Peptide	
Sequence	C-DSQSKSKNPWYIDE
Purification	Purified from goat serum by ammonium sulphate precipitation followed by antigen affinity chromatography
Method	using the immunizing peptide.
Shipping	
Instructions	Refrigerated

Predicted Species	Mouse, Rat
Reactive Species	Rat, Mouse
Mouse Gene ID	74256
Rat Gene ID	312937
Product Grade	https://prod-vector-labs-pimcore-assets.s3.us-east-1.amazonaws.com/assets/products/image/elite_medium.png
IHC Results	Paraffin embedded Mouse Brain. Recommended concentration: 5µg/ml.
ELISA	
Detection Limit	Antibody detection limit dilution 1:32000.
Western Blot	Approx 125kDa band observed in Rat Brain lysates (calculated MW of 107kDa according to mouse NP_775545.1). Recommended concentration: 0.5-1.5µg/ml.
Application Type	Pep-ELISA, WB, IHC

DOCUMENTS

- [Data Sheet](#)

GALLERY IMAGES

