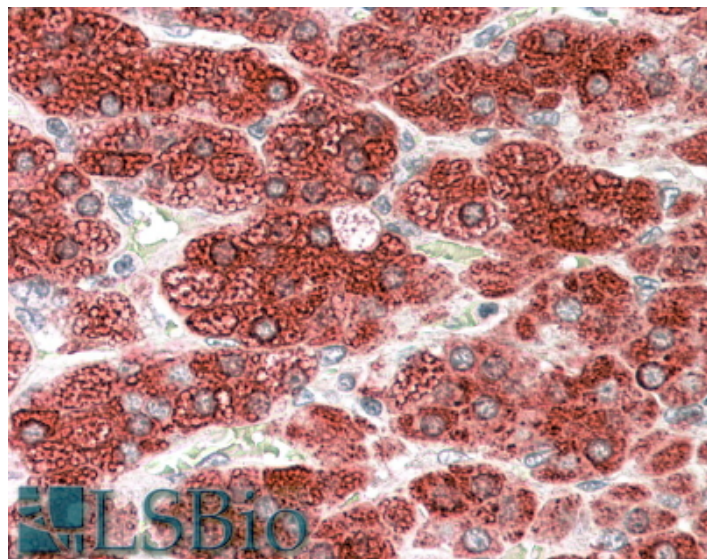


# GOAT ANTI-CYP17A1 ANTIBODY

**SKU:** EB07219



## SPECIFICATIONS

<b>Formulation</b>	Supplied at 0.5 mg/ml in Tris saline, 0.02% sodium azide, pH7.3 with 0.5% bovine serum albumin.
<b>Unit Size</b>	100 µg
<b>Storage</b>	Aliquot and store at -20°C. Minimize freezing and thawing.
<b>Instructions</b>	
<b>Synonym / Alias Names</b>	steroid 17-alpha-monooxygenase steroid 17-alpha-hydroxylase/17, 20 lyase cytochrome p450 XVIIA1 cytochrome P450, subfamily XVII (steroid 17-alpha-hydroxylase), adrenal hyperplasia cytochrome P450, family 17 S17AH P450C17 CYP17 CPT7 HGNC:2593 cytochrome P450, family 17, subfamily A, polypeptide 1 CYP17A1
<b>Accession ID</b>	NP_000093.1
<b>Blocking Peptide</b>	EBP07219
<b>Immunogen</b>	Peptide with sequence C-LFKDGDQKLEK, from the internal region of the protein sequence according to NP_000093.1.
<b>Peptide Sequence</b>	C-LFKDGDQKLEK
<b>Purification Method</b>	Purified from goat serum by ammonium sulphate precipitation followed by antigen affinity chromatography using the immunizing peptide.

<b>Shipping Instructions</b>	Refrigerated
<b>Predicted Species</b>	Human, Cat, Dog
<b>Reactive Species</b>	Human
<b>Human Gene ID</b>	1586
<b>Product Grade</b>	<a href="https://prod-vector-labs-pimcore-assets.s3.us-east-1.amazonaws.com/assets/products/image/elite_medium.png">https://prod-vector-labs-pimcore-assets.s3.us-east-1.amazonaws.com/assets/products/image/elite_medium.png</a>
<b>IHC Results</b>	In paraffin embedded Human Adenal Gland shows strong granular staining of the cytoplasm in medulla cells. Recommended concentration: 3-5µg/ml.
<b>ELISA</b>	
<b>Detection Limit</b>	Antibody detection limit dilution 1:64000.
<b>Western Blot</b>	Approx 60kDa band observed in Human Ovary lysates (calculated MW of 57.4kDa according to NP_000093.1). Recommended concentration: 0.1-0.3µg/ml. Primary incubation was 1 hour.
<b>Application Type</b>	Pep-ELISA, WB, IHC

## DOCUMENTS

- [Data Sheet](#)

## GALLERY IMAGES

