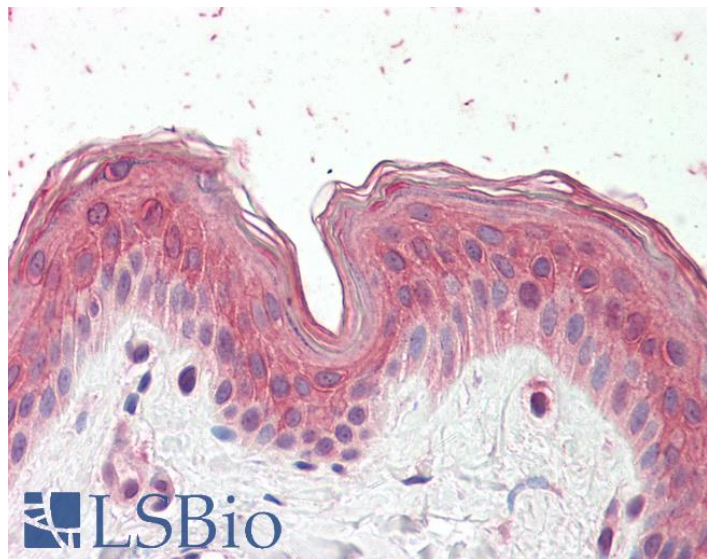


GOAT ANTI-CYP24A1 ANTIBODY

SKU: EB10490



SPECIFICATIONS

Formulation Supplied at 0.5 mg/ml in Tris saline, 0.02% sodium azide, pH7.3 with 0.5% bovine serum albumin.

Unit Size 100 µg

Storage Instructions Aliquot and store at -20°C. Minimize freezing and thawing.

Synonym / Alias Names 1, 25-dihydroxyvitamin D3 24-hydroxylase|24-OHase|CP24|CYP24|cytochrome P450 family 24 subfamily A polypeptide 1|cytochrome P450, family 24, subfamily A, polypeptide 1|cytochrome P450, subfamily XXIV (vitami|MGC126273|MGC126274|P450-CC24|CYP24A1

Accession ID NP_000773.2; NP_001122387.1

Blocking Peptide EBP10490

Immunogen Peptide with sequence C-RKYDIQATDN, from the internal region of the protein sequence according to NP_000773.2; NP_001122387.1.

Product Comments This antibody is expected to recognize both reported isoforms (NP_000773.2; NP_001122387.1).

Peptide Sequence C-RKYDIQATDN

Purification Method Purified from goat serum by ammonium sulphate precipitation followed by antigen affinity chromatography using the immunizing peptide.

Shipping Instructions	Refrigerated
Predicted Species	Human
Reactive Species	Human, Rat
Human Gene ID	1591
Product Grade	https://prod-vector-labs-pimcore-assets.s3.us-east-1.amazonaws.com/assets/products/image/elite_medium.png
IHC Results	Paraffin embedded Human Skin. Recommended concentration: 3.75µg/ml.
ELISA	
Detection Limit	Antibody detection limit dilution 1:32000.
Western Blot	Approx 50kDa band observed in Human and Rat Liver lysates (calculated MW of 51.2kDa according to NP_001122387.1). Recommended concentration: 0.1-0.3µg/ml. Primary incubation was 1 hour.
Application Type	Pep-ELISA, WB, IHC

DOCUMENTS

- [Data Sheet](#)

GALLERY IMAGES

