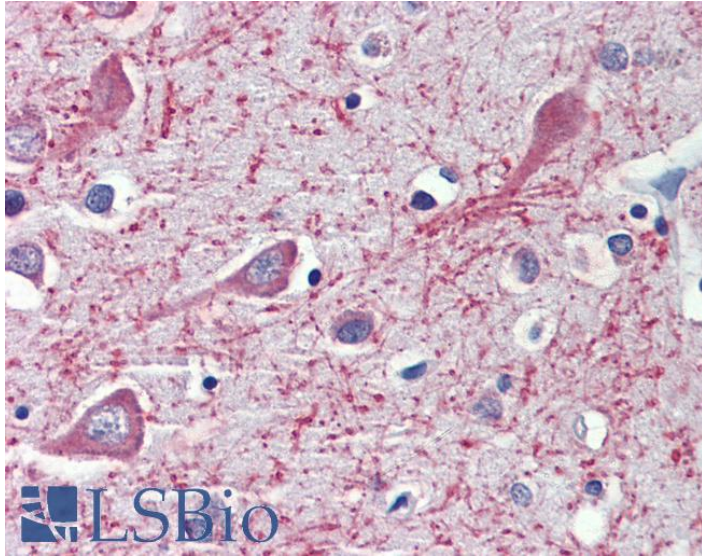


# GOAT ANTI-CYP26A1 ANTIBODY

SKU: EB09041



## SPECIFICATIONS

**Formulation** Supplied at 0.5 mg/ml in Tris saline, 0.02% sodium azide, pH7.3 with 0.5% bovine serum albumin.

**Unit Size** 100 µg

**Storage Instructions** Aliquot and store at -20°C. Minimize freezing and thawing.

**Synonym / Alias Names** retinoic acid-metabolizing cytochrome|retinoic acid 4-hydroxylase|cytochrome P450, subfamily XXVIA, polypeptide 1|P450, retinoic acid-inactivating, 1|P450RAI1|P450RAI|CYP26|CP26|cytochrome P450, family 26, subfamily A, polypeptide 1|CYP26A1

**Usage** <strong>Immunocytochemistry:</strong> ER-staining of PFA-fixed and TX100-treated HeLa cells.

**Summary** Recommended concentration: 2-5ug/ml.

**Accession ID** NP\_000774.2; NP\_476498.1

**Blocking Peptide** EBP09041

**Immunogen** Peptide with sequence C-NLPARFTHFHGE, from the internal region of the protein sequence according to NP\_000774.2; NP\_476498.1.

**Product Comments** This antibody is expected to recognize both reported isoforms (NP\_000774.2; NP\_476498.1)

**Peptide Sequence** C-NLPARFTHFHGE

<b>Purification Method</b>	Purified from goat serum by ammonium sulphate precipitation followed by antigen affinity chromatography using the immunizing peptide.
<b>Shipping Instructions</b>	Refrigerated
<b>Predicted Species</b>	Human
<b>Reactive Species</b>	Human
<b>Human Gene ID</b>	1592
<b>Product Grade</b>	<a href="https://prod-vector-labs-pimcore-assets.s3.us-east-1.amazonaws.com/assets/products/image/elite_medium.png">https://prod-vector-labs-pimcore-assets.s3.us-east-1.amazonaws.com/assets/products/image/elite_medium.png</a>
<b>IHC Results</b>	Paraffin embedded Human Brain (Cortex and Cerebellum). Recommended concentration: 3.75µg/ml.
<b>ELISA Detection Limit</b>	Antibody detection limit dilution 1:16000.
<b>Application Type</b>	Pep-ELISA, IHC, ICC

## DOCUMENTS

- [Data Sheet](#)

## GALLERY IMAGES

