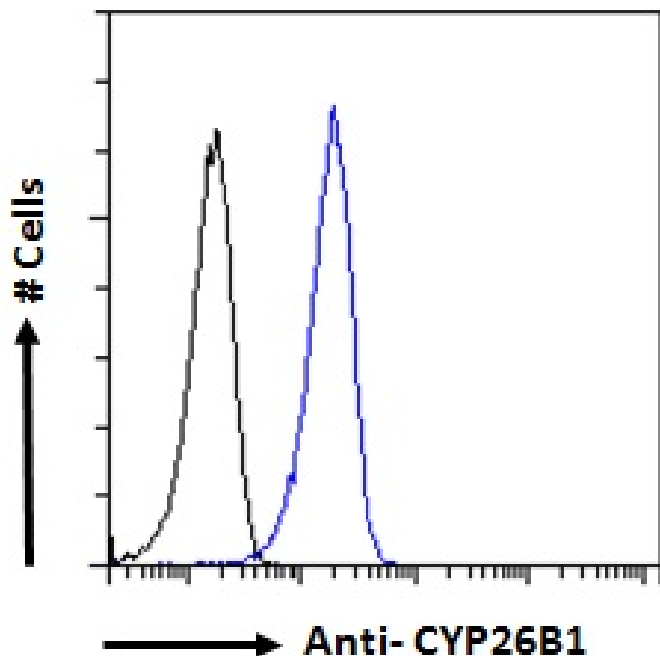


GOAT ANTI-CYP26B1 ANTIBODY

SKU: EB07481



SPECIFICATIONS

Formulation	Supplied at 0.5 mg/ml in Tris saline, 0.02% sodium azide, pH7.3 with 0.5% bovine serum albumin.
Unit Size	100 µg
Storage Instructions	Aliquot and store at -20°C. Minimize freezing and thawing.
Synonym / Alias	retinoic acid-metabolizing cytochrome cytochrome P450, family 26, subfamily b, polypeptide 1 cytochrome P450 retinoid metabolizing protein P450RAI-2 MGC129613 DKFZp686G0638 CYP26A2 cytochrome P450, family 26, subfamily B, polypeptide 1 CYP26B1
Usage Summary	Flow Cytometry: Flow cytometric analysis of A431 cells. Recommended concentration: 10ug/ml.
Accession ID	NP_063938.1; NP_001264671.1
Blocking Peptide	EBP07481
Immunogen	Peptide with sequence C-SQARSEDKDGRFH, from the internal region of the protein sequence according to NP_063938.1; NP_001264671.1.

Peptide Sequence	C-SQARSEDKDGRFH
Purification Method	Purified from goat serum by ammonium sulphate precipitation followed by antigen affinity chromatography using the immunizing peptide.
Shipping Instructions	Refrigerated
Predicted Species	Human, Mouse, Rat, Dog
Reactive Species	Human
Human Gene ID	56603
Mouse Gene ID	232174
Rat Gene ID	312495
Product Grade	https://prod-vector-labs-pimcore-assets.s3.us-east-1.amazonaws.com/assets/products/image/elite_plus_medium.png
IHC Results	In paraffin embedded Human Cerebellum shows staining of cell bodies in the Molecular Layer. Recommended concentration: 4-6µg/ml. Paraffin embedded Human Small Intestine, Spleen and Testis. Recommended concentration: 3.75µg/ml.
ELISA Detection Limit	Antibody detection limit dilution 1:128000.
Application Type	Pep-ELISA, FC, IHC

DOCUMENTS

- [Data Sheet](#)

GALLERY IMAGES

