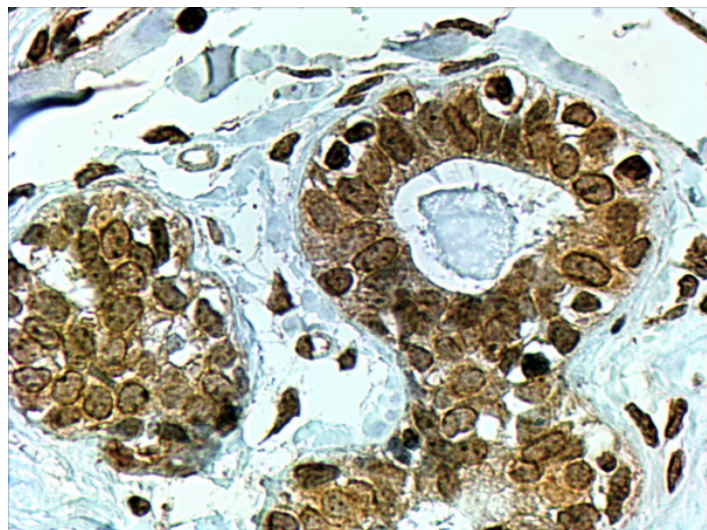


GOAT ANTI-CYP7B1 ANTIBODY

SKU: EB06161



SPECIFICATIONS

Formulation Supplied at 0.5 mg/ml in Tris saline, 0.02% sodium azide, pH7.3 with 0.5% bovine serum albumin.

Unit Size 100 µg

Storage Instructions Aliquot and store at -20°C. Minimize freezing and thawing.

Synonym / Alias Names SPG5A|CBAS3|cytochrome P450, subfamily VII B (oxysterol 7 alpha-hydroxylase), polypeptide 1|oxysterol 7alpha-hydroxylase|cytochrome P450, family 7, subfamily B, polypeptide 1|CP7B|CYP7B1

Accession ID NP_004811.1

Blocking Peptide EBP06161

Immunogen Peptide with sequence C-YPDSDVLFYKVK, from the C Terminus of the protein sequence according to NP_004811.1.

Peptide Sequence C-YPDSDVLFYKVK

Purification Method Purified from goat serum by ammonium sulphate precipitation followed by antigen affinity chromatography using the immunizing peptide.

Shipping Instructions Refrigerated

Predicted Species	Human, Cow
Human Gene ID	9420
Product Grade	https://prod-vector-labs-pimcore-assets.s3.us-east-1.amazonaws.com/assets/products/image/elite_medium.png
IHC Results	In paraffin embedded Human Breast shows textured cytoplasm staining in ductal epithelial cells. Recommended concentration, 3-6µg/ml.
ELISA	
Detection Limit	Antibody detection limit dilution 1:128000.
Western Blot	Preliminary experiments in Human Liver, Kidney and Prostate lysates gave no specific signal but low background (at antibody concentration up to 1µg/ml). We would appreciate any feedback from people in the field - have any results been reported with other antibodies/lysates?
Application Type	Pep-ELISA, IHC

DOCUMENTS

- [Data Sheet](#)

GALLERY IMAGES

