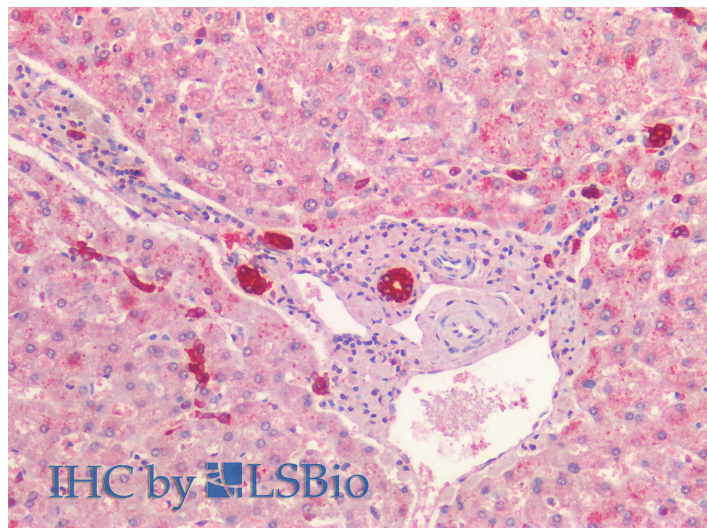


GOAT ANTI-CYTOKERATIN 19 ANTIBODY

SKU: EB12360



SPECIFICATIONS

Formulation Supplied at 0.5 mg/ml in Tris saline, 0.02% sodium azide, pH7.3 with 0.5% bovine serum albumin.

Unit Size 100 µg

Storage Instructions Aliquot and store at -20°C. Minimize freezing and thawing.

Synonym / Alias Names keratin-19|keratin, type I, 40-kd|keratin, type I cytoskeletal 19|cytokeratin-19|cytokeratin 19|CK-19|40-kDa keratin intermediate filament|K1CS|K19|CK19|keratin 19|KRT19

Accession ID NP_002267.2

Blocking Peptide EBP12360

Immunogen Peptide with sequence C-EGQEDHYNNLSASK, from the C Terminus of the protein sequence according to NP_002267.2.

Peptide Sequence C-EGQEDHYNNLSASK

Purification Method Purified from goat serum by ammonium sulphate precipitation followed by antigen affinity chromatography using the immunizing peptide.

Shipping Instructions Refrigerated

Predicted Species	Human
Reactive Species	Human
Human Gene ID	3880
Product Grade	https://prod-vector-labs-pimcore-assets.s3.us-east-1.amazonaws.com/assets/products/image/elite_medium.png
IHC Results	Paraffin embedded Human Liver. Recommended concentration: 5µg/ml.
ELISA Detection Limit	Antibody detection limit dilution 1:64000.
Western Blot	Approx 43kDa band observed in Human cancer lysates of Breast, Pancreas and Colon (calculated MW of 44.1kDa according to NP_002267.2). Recommended concentration: 0.03-0.1µg/ml. Primary incubation was 1 hour.
Application Type	Pep-ELISA, WB, IHC

DOCUMENTS

- [Data Sheet](#)

GALLERY IMAGES

