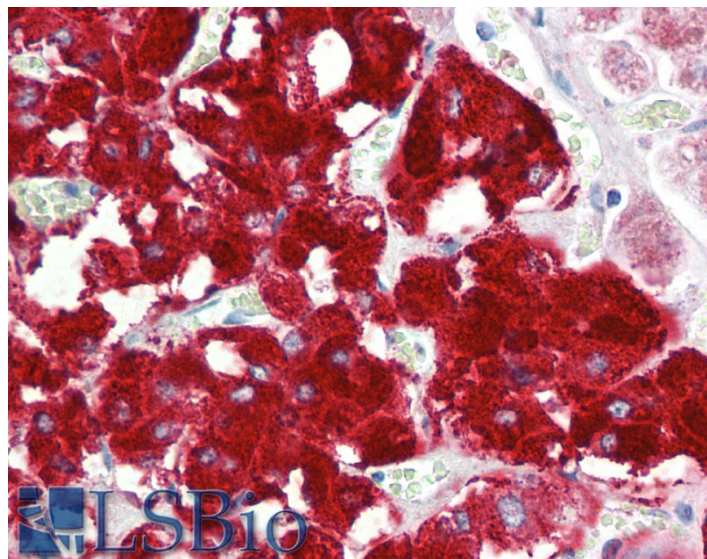


# GOAT ANTI-DBH (AA437-448) ANTIBODY

**SKU:** EB11321



## SPECIFICATIONS

**Formulation** Supplied at 0.5 mg/ml in Tris saline, 0.02% sodium azide, pH7.3 with 0.5% bovine serum albumin.

**Unit Size** 100 µg

**Storage Instructions** Aliquot and store at -20°C. Minimize freezing and thawing.

**Synonym /**

**Alias Names** DBH| dopamine beta-hydroxylase (dopamine beta-monoxygenase)| dopamine beta-hydroxylase| DBM

**Accession ID** NP\_000778.3

**Blocking Peptide** EBP11321

**Immunogen** Peptide with sequence C-DNHYSPPHFQEIR, from the internal region of the protein sequence according to NP\_000778.3.

**Peptide Sequence** C-DNHYSPPHFQEIR

**Purification Method** Purified from goat serum by ammonium sulphate precipitation followed by antigen affinity chromatography using the immunizing peptide.

**Shipping Instructions** Refrigerated

<b>Predicted Species</b>	Human, Mouse, Rat, Pig, Cow
<b>Reactive Species</b>	Human
<b>Human Gene ID</b>	1621
<b>Mouse Gene ID</b>	13166
<b>Rat Gene ID</b>	25699
<b>Product Grade</b>	<a href="https://prod-vector-labs-pimcore-assets.s3.us-east-1.amazonaws.com/assets/products/image/elite_medium.png">https://prod-vector-labs-pimcore-assets.s3.us-east-1.amazonaws.com/assets/products/image/elite_medium.png</a>
<b>IHC Results</b>	Paraffin embedded Human Adrenal Gland. Recommended concentration: 5µg/ml.
<b>ELISA</b>	
<b>Detection Limit</b>	Antibody detection limit dilution 1:128000.
<b>Western Blot</b>	Approx 70kDa band observed in lysates of cell line Jurkat (calculated MW of 69.1kDa according to NP_000778.3). Recommended concentration: 1-3µg/ml. Primary incubation was 1 hour. Preliminary testing was unsuccessful on Mouse and Rat Brain for this particular batch.
<b>Application Type</b>	Pep-ELISA, WB, IHC

## DOCUMENTS

- [Data Sheet](#)

## GALLERY IMAGES

