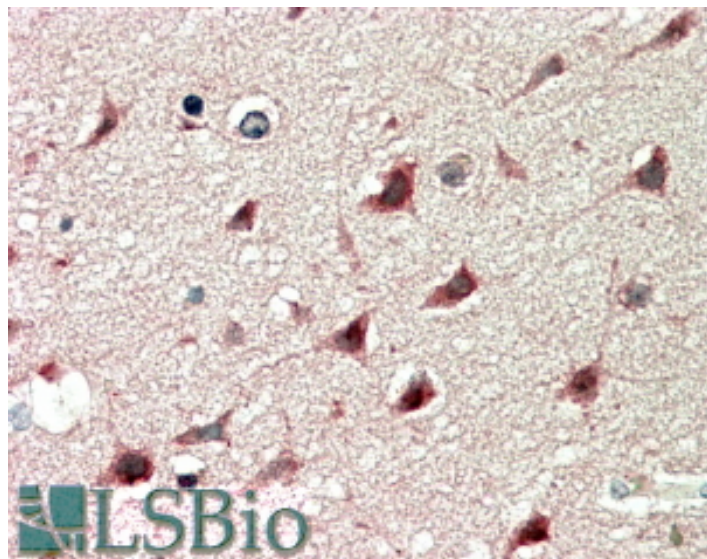


GOAT ANTI-DCDC2 ANTIBODY

SKU: EB07059



SPECIFICATIONS

Formulation Supplied at 0.5 mg/ml in Tris saline, 0.02% sodium azide, pH7.3 with 0.5% bovine serum albumin.

Unit Size 100 µg

Storage Instructions Aliquot and store at -20°C. Minimize freezing and thawing.

Synonym /

Alias DCDC2A|RU25|RU2|KIAA1154|HGNC:18141|doublecortin domain containing 2|DCDC2

Names

Accession ID NP_057440.2

Blocking Peptide EBP07059

Immunogen Peptide with sequence C-DGEKANKDAEQKED, from the internal region of the protein sequence according to NP_057440.2.

Peptide Sequence C-DGEKANKDAEQKED

Purification Method Purified from goat serum by ammonium sulphate precipitation followed by antigen affinity chromatography using the immunizing peptide.

Shipping Instructions Refrigerated

Predicted Species	Human, Dog, Pig
Reactive Species	Human, Mouse, Rat
Human Gene ID	51473
Product Grade	https://prod-vector-labs-pimcore-assets.s3.us-east-1.amazonaws.com/assets/products/image/elite_medium.png
IHC Results	In paraffin embedded Human Cerebral Cortex shows cytoplasm staining in select neurons. Recommended concentration, 5-10µg/ml. An anonymous customer found positive results in IHC on Rat retinal tissue. An anonymous customer found positive results in IHC on Rat dorsal root ganglion.
ELISA Detection Limit	Antibody detection limit dilution 1:4000.
Western Blot	Full length recombinant human DCDC2 expressed in COS7 (Lane A), non-transfectant COS7 (lane B). Approx 52kDa band observed (calculated MW of 52.8kDa according to NP_057440.1). Data kindly provided by Wang and LoTurco, University of Connecticut, USA. Recommended concentration 0.1-0.3ug/ml. An anonymous customer found positive results in WB on Mouse brain tissue.
Application Type	Pep-ELISA, WB, IHC

DOCUMENTS

- [Data Sheet](#)

GALLERY IMAGES

