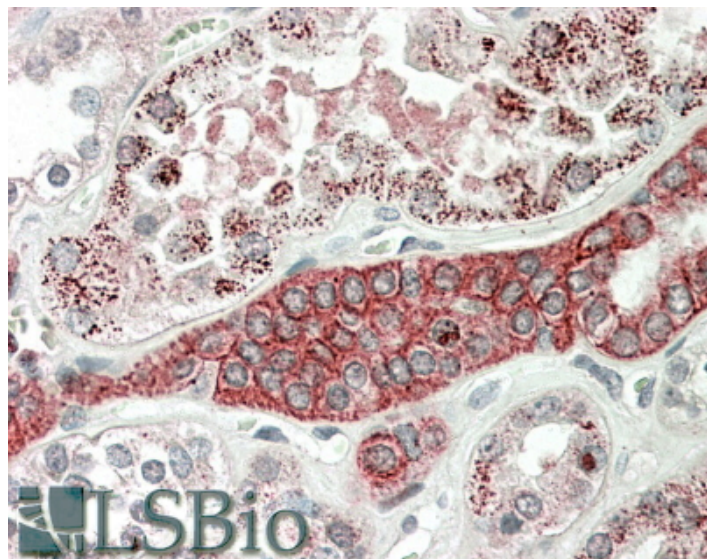


GOAT ANTI-DCUN1D1 ANTIBODY

SKU: EB09917



SPECIFICATIONS

Formulation Supplied at 0.5 mg/ml in Tris saline, 0.02% sodium azide, pH7.3 with 0.5% bovine serum albumin.

Unit Size 100 µg

Storage Instructions Aliquot and store at -20°C. Minimize freezing and thawing.

Synonym / Alias Names DCUN1D1|Tes3|squamous cell carcinoma-related oncogene|SCRO|SCCRO|RP42 homolog|RP42|DCUN1L1|DCN1, defective in cullin neddylation 1, domain containing 1 (S. cerevisiae)

Accession ID NP_065691.2

Blocking Peptide EBP09917

Immunogen Peptide with sequence C-RPQIAGTKSTT, from the C Terminus of the protein sequence according to NP_065691.2.

Peptide Sequence C-RPQIAGTKSTT

Purification Method Purified from goat serum by ammonium sulphate precipitation followed by antigen affinity chromatography using the immunizing peptide.

Shipping Instructions Refrigerated

Predicted Species	Human, Mouse, Cow
Reactive Species	Human
Human Gene ID	54165
Mouse Gene ID	114893
Product Grade	https://prod-vector-labs-pimcore-assets.s3.us-east-1.amazonaws.com/assets/products/image/elite_medium.png
IHC Results	In paraffin embedded Human Kidney shows pixulated staining in the cytoplasm of epithelial cells of PCT, but heavy cytoplasm staining in the epithelial cells of the DCT. Recommended concentration, 5-10µg/ml.
ELISA	
Detection Limit	Antibody detection limit dilution 1:16000.
Western Blot	Approx 28kDa band observed in HepG2 lysates (calculated MW of 30.1kDa according to NP_065691.2). Recommended concentration: 0.3-1µg/ml.
Application Type	Pep-ELISA, WB, IHC

DOCUMENTS

- [Data Sheet](#)

GALLERY IMAGES

