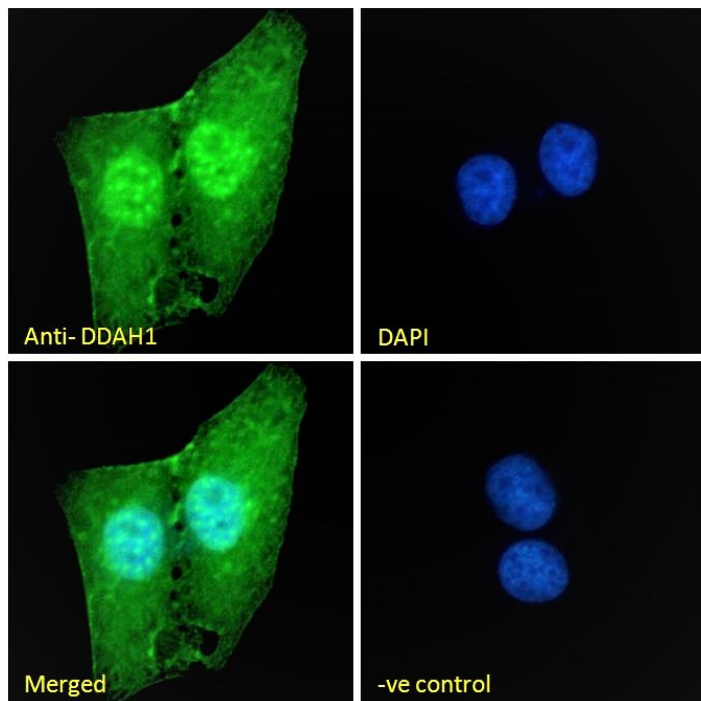


GOAT ANTI-DDAH1 ANTIBODY

SKU: EB05278



SPECIFICATIONS

Formulation	Supplied at 0.5 mg/ml in Tris saline, 0.02% sodium azide, pH7.3 with 0.5% bovine serum albumin.
Unit Size	100 µg
Storage Instructions	Aliquot and store at -20°C. Minimize freezing and thawing.
Synonym / Alias Names	FLJ25539 FLJ21264 RP4-621F18.1 NG, NG-dimethylarginine dimethylaminohydrolase DDAH1 DDAH dimethylarginine dimethylaminohydrolase 1 DDAH1
Usage Summary	<p>Immunofluorescence: Strong expression of the protein seen in HeLa and U2OS cells.</p> <p>Flow Cytometry: Flow cytometric analysis of HeLa cells. Recommended concentration: 10ug/ml.</p>
Accession ID	NP_036269.1; NP_001127917.1; NP_001317584.1
Blocking Peptide	EBP05278

Immunogen	Peptide with sequence TCCSVLINKKVDS, from the C Terminus of the protein sequence according to NP_036269.1; NP_001127917.1; NP_001317584.1.
Product Comments	This antibody is expected to recognize both reported isoforms (NP_036269.1 and NP_001127917.1).
Peptide Sequence	TCCSVLINKKVDS
Purification Method	Purified from goat serum by ammonium sulphate precipitation followed by antigen affinity chromatography using the immunizing peptide.
Shipping Instructions	Refrigerated
Predicted Species	Human, Cow
Reactive Species	Human
Human Gene ID	23576
Product Grade	https://prod-vector-labs-pimcore-assets.s3.us-east-1.amazonaws.com/assets/products/image/elite_plus_medium.png
ELISA Detection Limit	Antibody detection limit dilution 1:1000.
Western Blot	Approx 37kDa band observed in Human Cerebellum, Kidney and Testis lysates, and in lysates of cell lines HepG2 and LNCaP (calculated MW of 31.1kDa according to NP_036269.1). This molecular weight is routinely observed by other sources. Recommended concentration: 0.1-0.3µg/ml. Primary incubation 1 hour at room temperature.
Application Type	Pep-ELISA, WB, IF, FC

DOCUMENTS

- [Data Sheet](#)

GALLERY IMAGES

