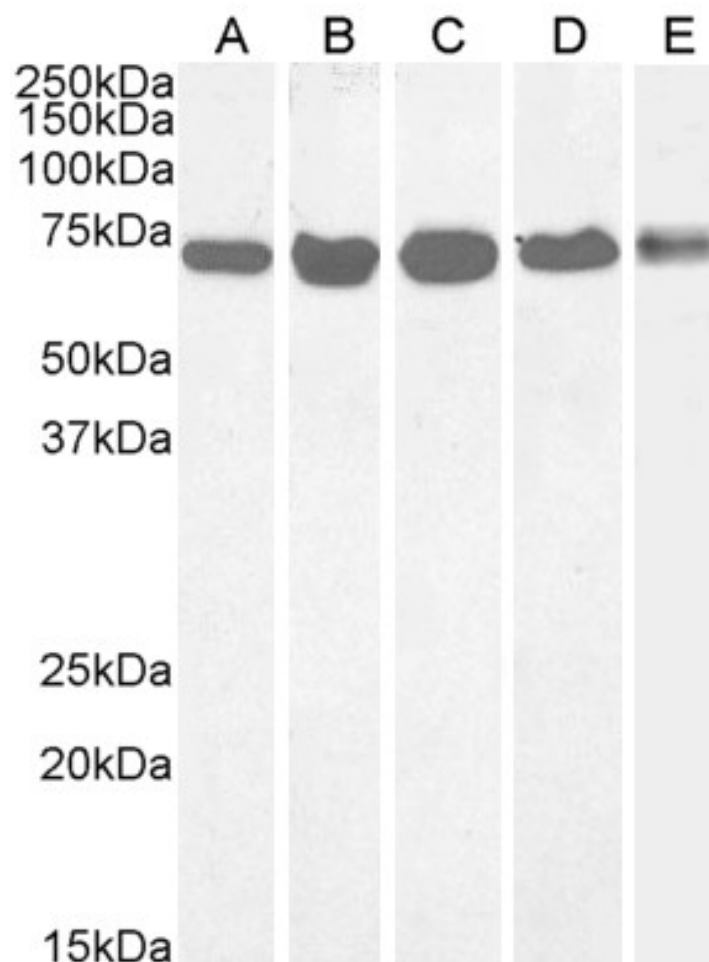


GOAT ANTI-DDX5 / P68 RNA HELICASE ANTIBODY

SKU: EB06310



SPECIFICATIONS

Formulation Supplied at 0.5 mg/ml in Tris saline, 0.02% sodium azide, pH7.3 with 0.5% bovine serum albumin.

Unit Size 100 µg

Storage Instructions Aliquot and store at -20°C. Minimize freezing and thawing.

Synonym / Alias Names	DEAD box-5 ATP-dependent RNA helicase DDX5 DKFZp686J01190 DKFZp434E109 DEAD (Asp-Glu-Ala-Asp) box polypeptide 5 DEAD/H (Asp-Glu-Ala-Asp/His) box polypeptide 5 (RNA helicase, 68kD) DEAD/H box-5 (RNA helicase, 68kD) RNA-dependent ATPase DEAD/H (Asp-Glu-Ala-Asp/His) box polypeptide 5 (RNA helicase, 68kDa) HUMP68 G17P1 HLR1 P68 DDX5
Accession ID	NP_004387.1
Blocking Peptide	EBP06310
Immunogen	Peptide with sequence C-PMIGYPMPTGYSQ, from the C Terminus of the protein sequence according to NP_004387.1.
Peptide Sequence	C-PMIGYPMPTGYSQ
Purification Method	Purified from goat serum by ammonium sulphate precipitation followed by antigen affinity chromatography using the immunizing peptide.
Shipping Instructions	Refrigerated
Predicted Species	Human, Mouse, Rat, Dog
Reactive Species	Human, Mouse
Human Gene ID	1655
Mouse Gene ID	13207
Product Grade	https://prod-vector-labs-pimcore-assets.s3.us-east-1.amazonaws.com/assets/products/image/elite_medium.png
ELISA Detection Limit	Antibody detection limit dilution 1:2000.
Western Blot	Approx 70kDa band observed in nuclear lysates of cell lines NIH3T3, A431, HeLa and Jurkat (calculated MW of 69.1kDa according to NP_004387.1). Recommended concentration: 0.3-1µg/ml. Primary incubation was 1 hour.
Application Type	Pep-ELISA, WB

DOCUMENTS

- [Data Sheet](#)

GALLERY IMAGES

