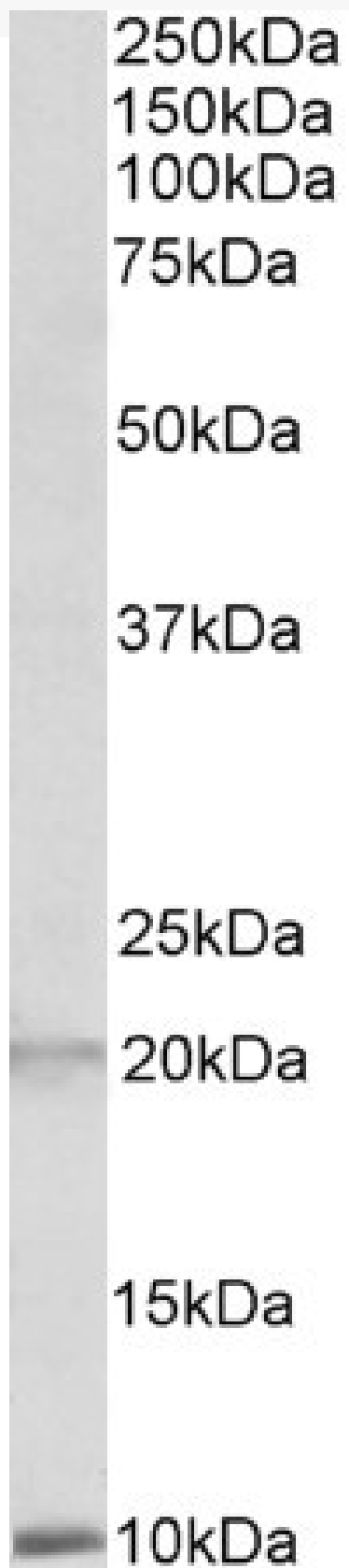


# GOAT ANTI-DEFA1/3 PRECURSOR ANTIBODY

**SKU:** EB09742



## SPECIFICATIONS

<b>Formulation</b>	Supplied at 0.5 mg/ml in Tris saline, 0.02% sodium azide, pH7.3 with 0.5% bovine serum albumin.
<b>Unit Size</b>	100 µg
<b>Storage Instructions</b>	Aliquot and store at -20°C. Minimize freezing and thawing.
<b>Synonym / Alias Names</b>	neutrophil peptide 3 defensin, alpha 3, neutrophil-specific DEFA3 myeloid-related sequence defensin, alpha 1 MRS HP-1 HNP-1 DEF1 HGNC:2761 defensin, alpha 1, myeloid-related sequence DEFA1
<b>Accession ID</b>	NP_004075.1; NP_005208.1
<b>Blocking Peptide</b>	EBP09742
<b>Immunogen</b>	Peptide with sequence C-DESLAPKHPGSRKN, from the internal region of the protein sequence according to NP_004075.1; NP_005208.1.
<b>Product Comments</b>	This antibody is expected to equally recognize DEFA1 precursor and DEFA3 precursor.
<b>Peptide Sequence</b>	C-DESLAPKHPGSRKN
<b>Purification Method</b>	Purified from goat serum by ammonium sulphate precipitation followed by antigen affinity chromatography using the immunizing peptide.
<b>Shipping Instructions</b>	Refrigerated
<b>Predicted Species</b>	Human
<b>Reactive Species</b>	Human
<b>Human Gene ID</b>	1667, 1668
<b>Product Grade</b>	<a href="https://prod-vector-labs-pimcore-assets.s3.us-east-1.amazonaws.com/assets/products/image/elite_medium.png">https://prod-vector-labs-pimcore-assets.s3.us-east-1.amazonaws.com/assets/products/image/elite_medium.png</a>
<b>IHC Results</b>	Paraffin embedded Human Thymus. Recommended concentration: 3-6µg/ml.
<b>ELISA Detection Limit</b>	Antibody detection limit dilution 1:128000.
<b>Western Blot</b>	Approx 10kDa band observed in Human Spleen lysates (calculated MW of 10.2kDa according to NP_004075.1). An additional band of unknown identity was also consistently observed at 20kDa, and was successfully blocked by incubation with the immunizing peptide. Recommended concentration: 1-3µg/ml. Primary incubation 1 hour at room temperature.
<b>Application Type</b>	Pep-ELISA, WB, IHC

## DOCUMENTS

- [Data Sheet](#)

## GALLERY IMAGES

