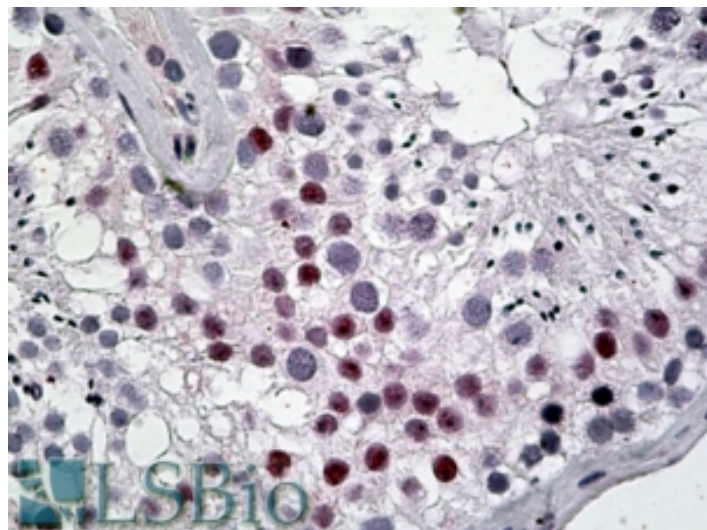


GOAT ANTI-DENTT / CDA1 ANTIBODY

SKU: EB05240



SPECIFICATIONS

Formulation Supplied at 0.5 mg/ml in Tris saline, 0.02% sodium azide, pH7.3 with 0.5% bovine serum albumin.

Unit Size 100 µg

Storage Instructions Aliquot and store at -20°C. Minimize freezing and thawing.

Synonym / Alias Names testis-specific protein Y encoded-like 2| testis-specific Y-encoded-like protein 2| nuclear protein of 79 kDa| differentially-expressed nucleolar TGF-beta1 target protein| differentially expressed nucleolar TGF-beta1 target| cutaneous T-cell lymphoma-associated tumor antigen se20-4| cutaneous T-cell lymphoma-associated antigen se20-4| cell division autoantigen 1| TSPY-like protein 2| CTCL-associated antigen se20-4| CTCL tumor antigen se20-4|CASK-interacting nucleosome assembly protein|TSPX|SE204|NP79|HRIHFB2216|DENTT|CTCL|CINAP|CDA1|RP1-290F12.2|TSPY-like 2|TSPYL2

Accession ID NP_071400.1

Blocking Peptide EBP05240

Immunogen Peptide with sequence C-PNGWANPGKRGKTG, from the C Terminus of the protein sequence according to NP_071400.1.

Peptide Sequence C-PNGWANPGKRGKTG

Purification Method Purified from goat serum by ammonium sulphate precipitation followed by antigen affinity chromatography using the immunizing peptide.

Shipping Instructions	Refrigerated
Predicted Species	Human, Dog
Reactive Species	Human
Human Gene ID	64061
Product Grade	https://prod-vector-labs-pimcore-assets.s3.us-east-1.amazonaws.com/assets/products/image/elite_medium.png
IHC Results	In paraffin embedded Human Testis shows nucleolar staining in spermatocytes. Recommended concentration, 5-10µg/ml.
ELISA	
Detection Limit	Antibody detection limit dilution 1:8000.
Application Type	Pep-ELISA, IHC

DOCUMENTS

- [Data Sheet](#)

GALLERY IMAGES

