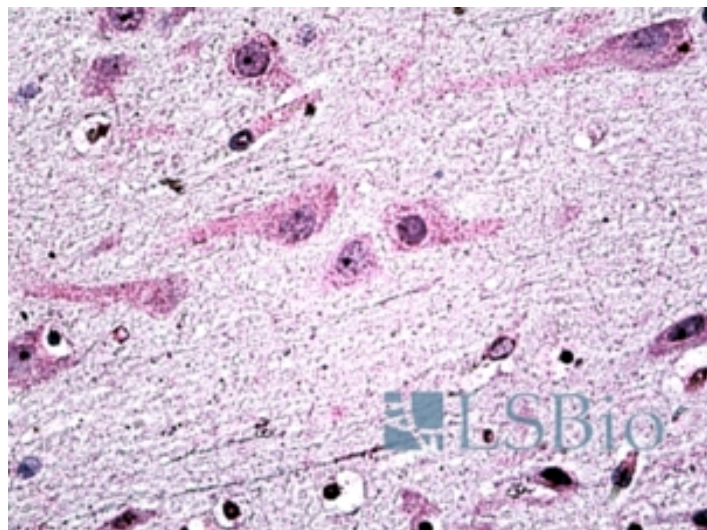


GOAT ANTI-DICER1 ANTIBODY

SKU: EB06871



SPECIFICATIONS

Formulation Supplied at 0.5 mg/ml in Tris saline, 0.02% sodium azide, pH7.3 with 0.5% bovine serum albumin.

Unit Size 100 µg

Storage Instructions Aliquot and store at -20°C. Minimize freezing and thawing.

Synonym / Alias Names helicase-moi|helicase with RNase motif|dicer1|K12H4.8-LIKE|KIAA0928|HERNA|Dicer|HGNC:17098|Dicer1, Dcr-1 homolog (Drosophila)|DICER1

Accession ID NP_085124.2; NP_803187.1

Blocking Peptide EBP06871

Immunogen Peptide with sequence QDKSNTDKWEKDEMTKDC, from the internal region of the protein sequence according to NP_085124.2; NP_803187.1.

Product Comments Reported variants represent identical protein: NP_085124.2, NP_803187.1.

Peptide Sequence QDKSNTDKWEKDEMTKDC

Purification Method Purified from goat serum by ammonium sulphate precipitation followed by antigen affinity chromatography using the immunizing peptide.

Shipping Instructions	Refrigerated
Predicted Species	Human, Mouse, Rat, Dog, Pig, Cow
Reactive Species	Human
Human Gene ID	23405
Mouse Gene ID	192119
Rat Gene ID	299284
Product Grade	https://prod-vector-labs-pimcore-assets.s3.us-east-1.amazonaws.com/assets/products/image/elite_medium.png
IHC Results	In paraffin embedded Human Brain shows nuclear staining in some neuronal cell bodies and weak cytoplasm staining in all cell bodies, Recommended concentration, 3-6µg/ml.
ELISA	
Detection Limit	Antibody detection limit dilution 1:2000.
Application Type	Pep-ELISA, IHC

DOCUMENTS

- [Data Sheet](#)

GALLERY IMAGES

