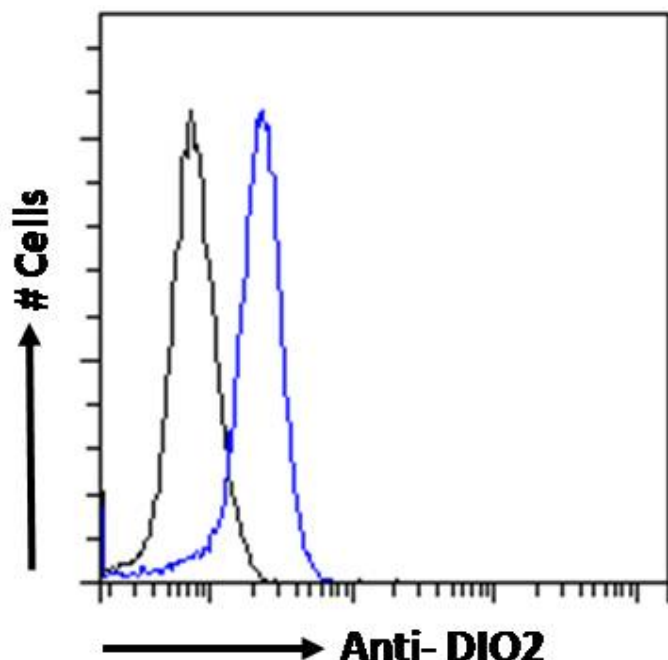


GOAT ANTI-DIO2 ANTIBODY

SKU: EB07628



SPECIFICATIONS

Formulation Supplied at 0.5 mg/ml in Tris saline, 0.02% sodium azide, pH7.3 with 0.5% bovine serum albumin.

Unit Size 100 µg

Storage Instructions Aliquot and store at -20°C. Minimize freezing and thawing.

Synonym / Alias Names type II iodothyronine deiodinaseN: type-II 5\1deiodinase|type 2 iodothyronine deiodinase|thyroxine deiodinase, type II|TXDI2|SeIY|D2|5DI|deiodinase, iodothyronine, type II|DIO2

Usage Summary **Immunofluorescence:** Strong expression of the protein seen in the cytoplasm and nuclei of HeLa cells. Recommended concentration: 10µg/ml. **Flow Cytometry:** Flow cytometric analysis of MCF7 cells. Recommended concentration: 10ug/ml.

Accession ID NP_000784.2; NP_054644.1; NP_001007024.1

Blocking Peptide EBP07628

Immunogen Peptide with sequence EVKKHQEQEDRC, from the internal region of the protein sequence according to NP_000784.2; NP_054644.1; NP_001007024.1.

Product	This antibody is expected to recognise both reported isoform a (NP_000784.2 and NP_054644.1) and isoform b
Comments	(NP_001007024.1).
Peptide Sequence	EVKKHQEQEDRC
Purification Method	Purified from goat serum by ammonium sulphate precipitation followed by antigen affinity chromatography using the immunizing peptide.
Shipping Instructions	Refrigerated
Predicted Species	Human, Mouse, Rat, Pig
Reactive Species	Human, Mouse
Human Gene ID	1734
Mouse Gene ID	13371
Rat Gene ID	65162
Product Grade	https://prod-vector-labs-pimcore-assets.s3.us-east-1.amazonaws.com/assets/products/image/elite_plus_medium.png
IHC Results	Cryo-sectioned Mouse Brain (Hippocampus) shows staining in the granular layer of the dentate gyrus. Recommended concentration: 2-3µg/ml. Data obtained from customer.
ELISA	
Detection Limit	Antibody detection limit dilution 1:128000.
Application Type	Pep-ELISA, FC, IF IHC

DOCUMENTS

- [Data Sheet](#)

GALLERY IMAGES

