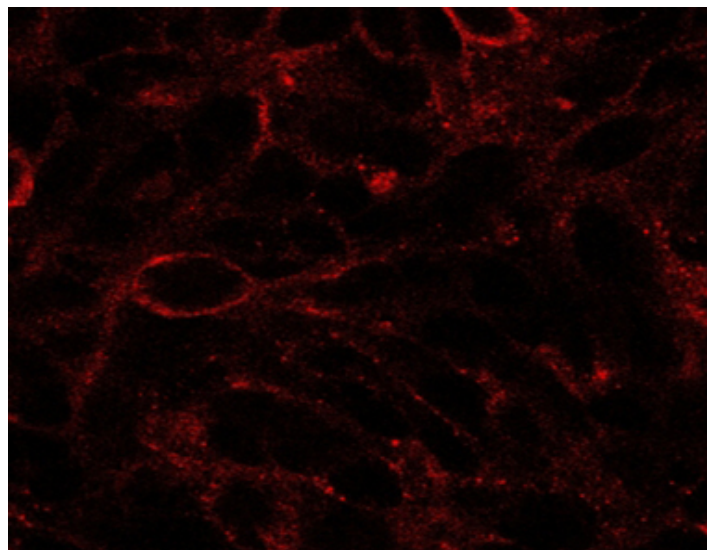


# GOAT ANTI-DISPATCHED HOMOLOG 1 ANTIBODY

**SKU:** EB06299



## SPECIFICATIONS

**Formulation** Supplied at 0.5 mg/ml in Tris saline, 0.02% sodium azide, pH7.3 with 0.5% bovine serum albumin.

**Unit Size** 100 µg

**Storage Instructions** Aliquot and store at -20°C. Minimize freezing and thawing.

**Synonym / Alias Names** MGC104180|FLJ43740|dispatched homolog 1 (Drosophila)|dispatched homolog 1|DISP1|dispatched A|DKFZP434I0428|MGC16796|MGC13130|DISPA

**Usage Summary** **Immunofluorescence:** Strong expression of the protein seen in the cell membrane of U87 cells. Recommended concentration: 2.5ug/ml. **Flow Cytometry:** Flow cytometric analysis of HEK293 cells. Recommended concentration: 10ug/ml.

**Accession ID** NP\_116279.2; NP\_001337559.1

**Blocking Peptide** EBP06299

**Immunogen** Peptide with sequence C-SELSGESLLIKTL, from the C Terminus of the protein sequence according to NP\_116279.2; NP\_001337559.1.

**Peptide Sequence** C-SELSGESLLIKTL

<b>Purification Method</b>	Purified from goat serum by ammonium sulphate precipitation followed by antigen affinity chromatography using the immunizing peptide.
<b>Shipping Instructions</b>	Refrigerated
<b>Predicted Species</b>	Human, Mouse, Rat, Pig
<b>Reactive Species</b>	Human
<b>Human Gene ID</b>	84976
<b>Product Grade</b>	<a href="https://prod-vector-labs-pimcore-assets.s3.us-east-1.amazonaws.com/assets/products/image/elite_medium.png">https://prod-vector-labs-pimcore-assets.s3.us-east-1.amazonaws.com/assets/products/image/elite_medium.png</a>
<b>ELISA Detection Limit</b>	Antibody detection limit dilution 1:32000.
<b>Application Type</b>	Pep-ELISA, IF, FC

## DOCUMENTS

- [Data Sheet](#)

## GALLERY IMAGES

