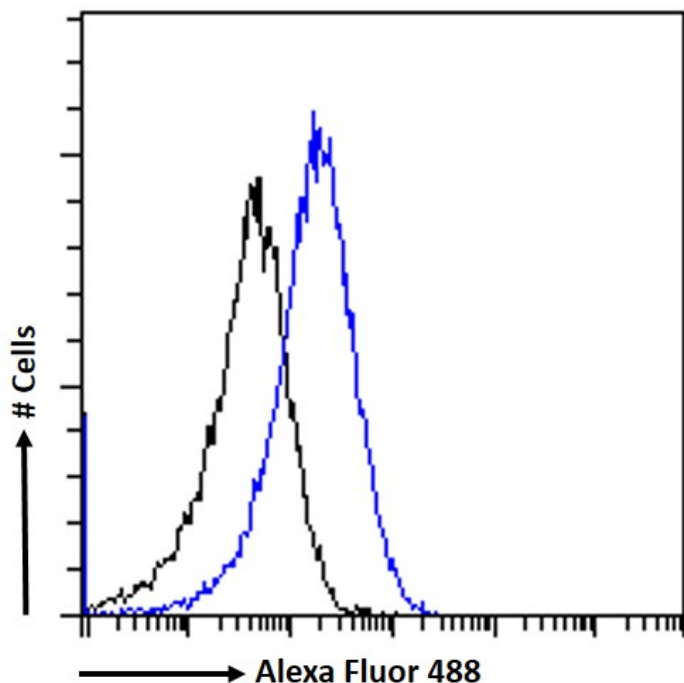


# GOAT ANTI-DLG1 ANTIBODY

SKU: EB08001



## SPECIFICATIONS

**Formulation** Supplied at 0.5 mg/ml in Tris saline, 0.02% sodium azide, pH7.3 with 0.5% bovine serum albumin.

**Unit Size** 100 µg

**Storage Instructions** Aliquot and store at -20°C. Minimize freezing and thawing.

**Synonym / Alias Names** synapse-associated protein 97|presynaptic protein SAP97|discs, large homolog 1|discs large homolog 1|hdlg|dJ1061C18.1.1|SAP97|DLGH1|DKFZp781B0426|DKFZp761P0818|discs, large homolog 1 (Drosophila)|DLG1

**Usage Summary** **Immunofluorescence:** Strong expression of the protein seen in the cytoplasm and ER of HeLa and U2OS cells. Recommended concentration: 10µg/ml. **Flow Cytometry:** Flow cytometric analysis of HeLa cells. Recommended concentration: 10ug/ml.

**Accession ID** NP\_001091894.1; NP\_004078.2; NP\_001191316.1; NP\_001191317.1; NP\_001353132.1; NP\_001353133.1; NP\_001353140.1; NP\_001353145.1; NP\_001353150.1; NP\_001353151.1

**Blocking Peptide** EBP08001

Peptide with sequence C-NSKTRDKGEIPDD, from the internal region of the protein sequence according to  
**Immunogen** NP\_001091894.1; NP\_004078.2; NP\_001191316.1; NP\_001191317.1; NP\_001353132.1; NP\_001353133.1; NP\_001353140.1; NP\_001353145.1; NP\_001353150.1; NP\_001353151.1.

**Peptide Sequence** C-NSKTRDKGEIPDD

**Purification Method** Purified from goat serum by ammonium sulphate precipitation followed by antigen affinity chromatography using the immunizing peptide.

**Shipping Instructions** Refrigerated

**Predicted Species** Human, Mouse, Rat

**Reactive Species** Human

**Human Gene ID** 1739

**Product Grade** [https://prod-vector-labs-pimcore-assets.s3.us-east-1.amazonaws.com/assets/products/image/elite\\_medium.png](https://prod-vector-labs-pimcore-assets.s3.us-east-1.amazonaws.com/assets/products/image/elite_medium.png)

**ELISA Detection Limit** Antibody detection limit dilution 1:16000.

**Western Blot** Preliminary testing showed a band at approx 150kDa in lysate of cell line Kelly after 0.3µg/ml antibody staining (calculated MW of 103kDa according to NP\_004078.2). This molecular weight is observed by other sources. Primary incubation 1 hour at room temperature.

**Application Type** Pep-ELISA, IF, FC

## DOCUMENTS

- [Data Sheet](#)

## GALLERY IMAGES

