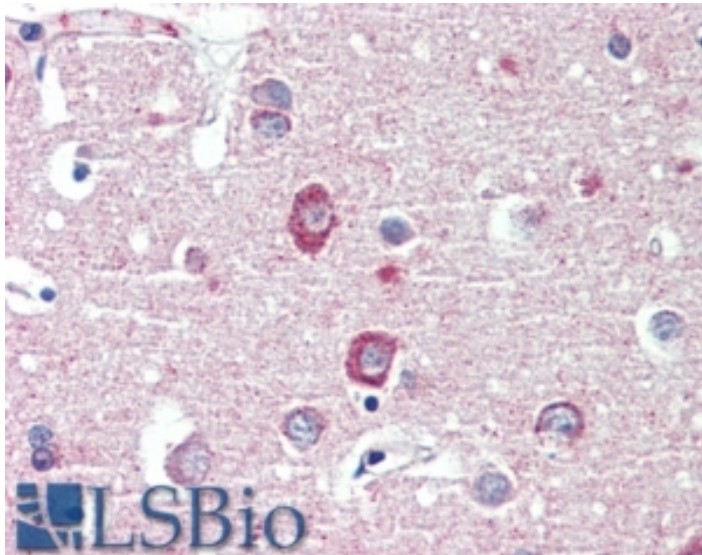




# GOAT ANTI-DLGAP1 / GKAP ANTIBODY

**SKU:** EB09176



## SPECIFICATIONS

<b>Formulation</b>	Supplied at 0.5 mg/ml in Tris saline, 0.02% sodium azide, pH7.3 with 0.5% bovine serum albumin.
<b>Unit Size</b>	100 µg
<b>Storage Instructions</b>	Aliquot and store at -20°C. Minimize freezing and thawing.
<b>Synonym / Alias Names</b>	guanylate kinase-associated protein disks large-associated protein 1 discs large homolog-associated protein 1 SAP90/PSD-95-associated protein 1 PSD-95/SAP90 binding protein 1 hGKAP SAPAP1 MGC88156 GKAP DAP-1-BETA DAP-1-ALPHA DAP-1 discs, large (Drosophila) homolog-associated protein 1 DLGAP1
<b>Accession ID</b>	NP_004737.2; NP_001003809.1
<b>Blocking Peptide</b>	EBP09176
<b>Immunogen</b>	Peptide with sequence C-KISNEHSPKLQIRSH, from the internal region of the protein sequence according to NP_004737.2; NP_001003809.1.
<b>Product Comments</b>	This antibody is expected to recognize both reported isoforms (NP_001003809.1; NP_004737.2)
<b>Peptide Sequence</b>	C-KISNEHSPKLQIRSH
<b>Purification Method</b>	Purified from goat serum by ammonium sulphate precipitation followed by antigen affinity chromatography using the immunizing peptide.



<b>Shipping Instructions</b>	Refrigerated
<b>Predicted Species</b>	human
<b>Reactive Species</b>	Human
<b>Human Gene ID</b>	9229
<b>Product Grade</b>	<a href="https://prod-vector-labs-pimcore-assets.s3.us-east-1.amazonaws.com/assets/products/image/elite_medium.png">https://prod-vector-labs-pimcore-assets.s3.us-east-1.amazonaws.com/assets/products/image/elite_medium.png</a>
<b>IHC Results</b>	In paraffin embedded Human Cortex shows cytoplasm staining in neuronal cell bodies. Recommended concentration, 3-6µg/ml.
<b>ELISA</b>	
<b>Detection Limit</b>	Antibody detection limit dilution 1:64000.
<b>Application Type</b>	Pep-ELISA, IHC

## DOCUMENTS

- [Data Sheet](#)

## GALLERY IMAGES

