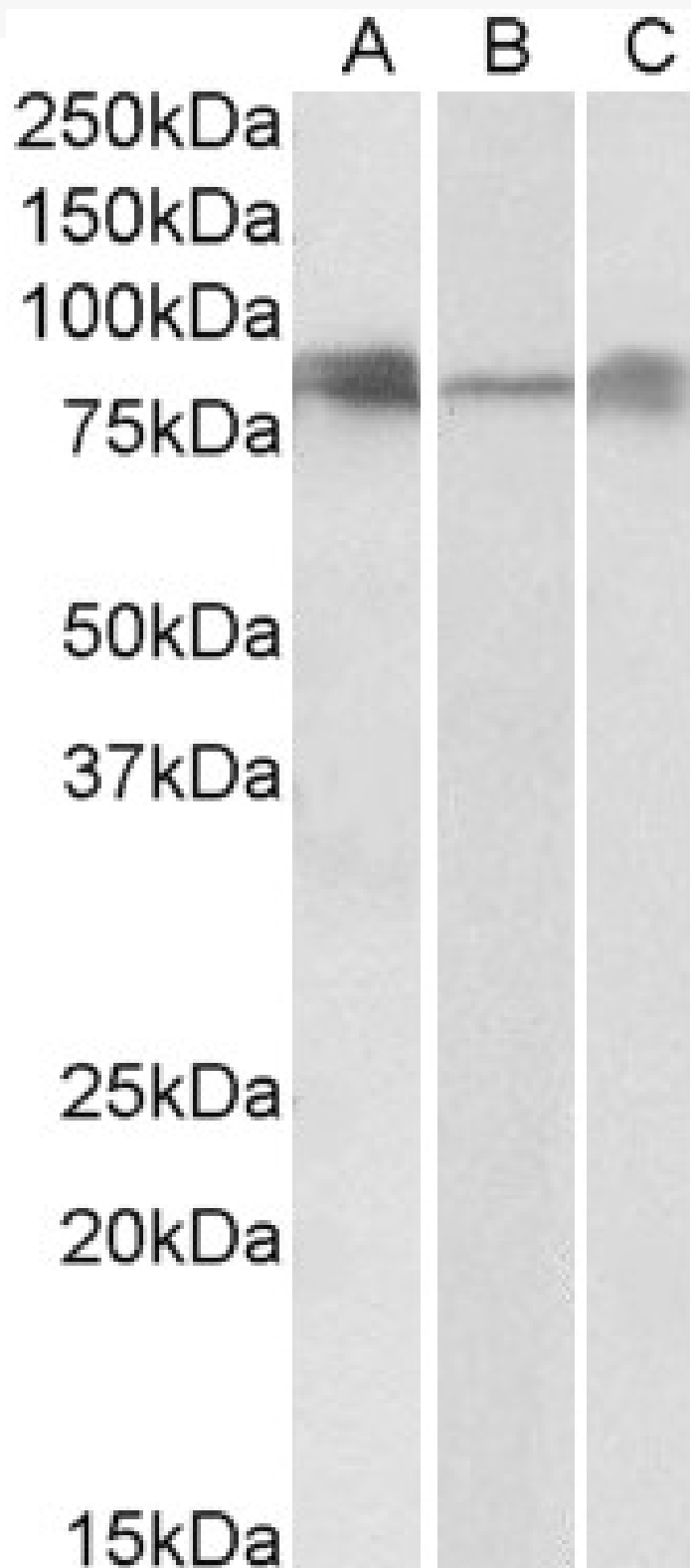


GOAT ANTI-DLL4 ANTIBODY

SKU: EB08011



SPECIFICATIONS

Formulation	Supplied at 0.5 mg/ml in Tris saline, 0.02% sodium azide, pH7.3 with 0.5% bovine serum albumin.
Unit Size	100 µg
Storage Instructions	Aliquot and store at -20°C. Minimize freezing and thawing.
Synonym / Alias Names	notch ligand delta-2 notch ligand DLL4 delta-like 4 protein delta-like 4 homolog delta ligand 4 delta 4 hdelta2 MGC126344 delta-like 4 (Drosophila) DLL4
Accession ID	NP_061947.1
Blocking Peptide	EBP08011
Immunogen	Peptide with sequence KNTNQKKELEVDC, from the internal region of the protein sequence according to NP_061947.1.
Product Comments	Notch signaling
Peptide Sequence	KNTNQKKELEVDC
Purification Method	Purified from goat serum by ammonium sulphate precipitation followed by antigen affinity chromatography using the immunizing peptide.
Shipping Instructions	Refrigerated
Predicted Species	Human, Mouse, Rat
Reactive Species	Human, Mouse, Rat
Human Gene ID	54567
Product Grade	https://prod-vector-labs-pimcore-assets.s3.us-east-1.amazonaws.com/assets/products/image/elite_medium.png
ELISA Detection Limit	Antibody detection limit dilution 1:64000.
Western Blot	Approx 80-85kDa bands observed in Human, Mouse and Rat Lung lysates (calculated MW of 74.6kDa according to NP_061947.1). Recommended concentration: 0.3-1µg/ml. Primary incubation was 1 hour.
Application Type	Pep-ELISA, WB

DOCUMENTS

- [Data Sheet](#)

GALLERY IMAGES

