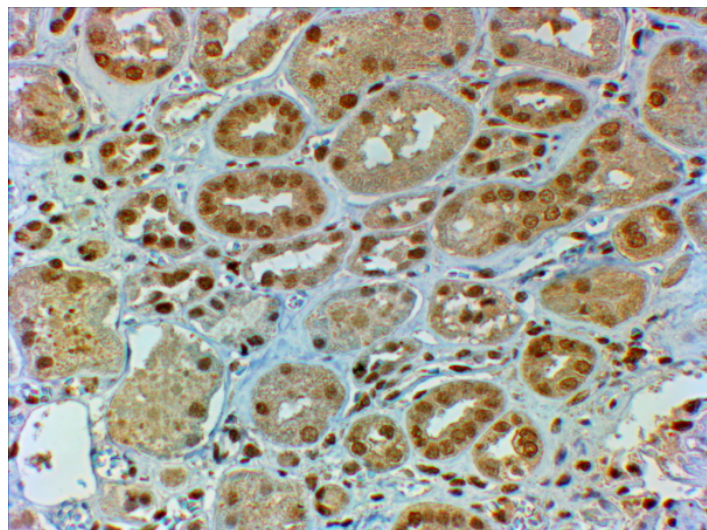


GOAT ANTI-DMRT2 ANTIBODY

SKU: EB09408



SPECIFICATIONS

Formulation	Supplied at 0.5 mg/ml in Tris saline, 0.02% sodium azide, pH7.3 with 0.5% bovine serum albumin.
Unit Size	100 µg
Storage Instructions	Aliquot and store at -20°C. Minimize freezing and thawing.
Synonym / Alias Names	terra-like protein OTTHUMP00000020967 OTTHUMP00000020966 OTTHUMP00000020965 OTTHUMP00000020964 doublesex and mab-3 related transcription factor 2 DMRT2
Accession ID	NP_006548.1; NP_870987.2
Blocking Peptide	EBP09408
Immunogen	Peptide with sequence C-KRPSSAITRVSQ, from the C Terminus of the protein sequence according to NP_006548.1; NP_870987.2.
Product Comments	This antibody is expected to recognize isoform 2 only (NP_870987.2). Reported variants NP_001124337.1 and NP_006548.1 represent identical protein
Peptide Sequence	C-KRPSSAITRVSQ
Purification Method	Purified from goat serum by ammonium sulphate precipitation followed by antigen affinity chromatography using the immunizing peptide.
Shipping Instructions	Refrigerated

Predicted Species	Human, Mouse, Rat, Cow
Reactive Species	Human
Human Gene ID	10655
Mouse Gene ID	226049
Rat Gene ID	309430
Product Grade	https://prod-vector-labs-pimcore-assets.s3.us-east-1.amazonaws.com/assets/products/image/elite_medium.png
IHC Results	In paraffin embedded Human Kidney shows nuclear staining primarily in the DCT. Recommended concentration, 2-4µg/ml.
ELISA	
Detection Limit	Antibody detection limit dilution 1:8000.
Application Type	Pep-ELISA, IHC

DOCUMENTS

- [Data Sheet](#)

GALLERY IMAGES

