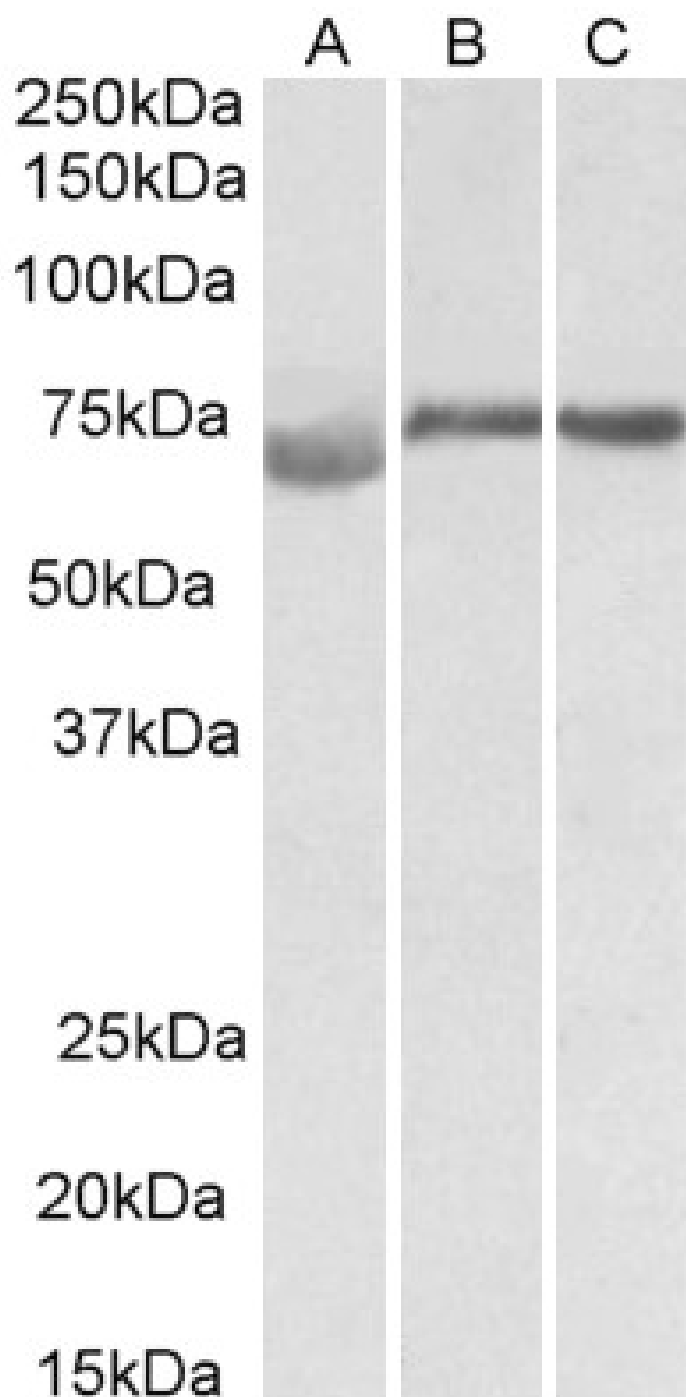


GOAT ANTI-DMTF1 (AA629-642) ANTIBODY

SKU: EB12121



SPECIFICATIONS

Formulation	Supplied at 0.5 mg/ml in Tris saline, 0.02% sodium azide, pH7.3 with 0.5% bovine serum albumin.
Unit Size	100 µg
Storage Instructions	Aliquot and store at -20°C. Minimize freezing and thawing.
Synonym / Alias Names	DMTF1 cyclin D binding myb-like transcription factor 1 DMP1 DMTF hDMP1 cyclin D-binding Myb-like protein cyclin-D-binding Myb-like transcription factor 1 cyclin-D-interacting Myb-like protein 1 hDMTF1
Accession ID	NP_066968.3; NP_001135798.1
Blocking Peptide	EBP12121
Immunogen	Peptide with sequence C-DAHVSKFSDQNSTE, from the internal region of the protein sequence according to NP_066968.3; NP_001135798.1.
Product Comments	This antibody is expected to recognize both reported isoforms (NP_066968.3; NP_001135798.1). Reported variants represent identical protein: NP_066968.3, NP_001135799.1
Peptide Sequence	C-DAHVSKFSDQNSTE
Purification Method	Purified from goat serum by ammonium sulphate precipitation followed by antigen affinity chromatography using the immunizing peptide.
Shipping Instructions	Refrigerated
Predicted Species	Human, Mouse, Dog, Pig, Cow
Reactive Species	Human, Mouse, Rat
Human Gene ID	9988
Mouse Gene ID	23857
Product Grade	https://prod-vector-labs-pimcore-assets.s3.us-east-1.amazonaws.com/assets/products/image/elite_medium.png
ELISA Detection Limit	Antibody detection limit dilution 1:8000.
Western Blot	Approx 70-75kDa band observed in Human, Mouse and Rat Testis lysates (calculated MW of 74.9kDa according to NP_001135799.1). Recommended concentration: 1-3µg/ml.
Application Type	Pep-ELISA, WB

DOCUMENTS

- [Data Sheet](#)

GALLERY IMAGES

