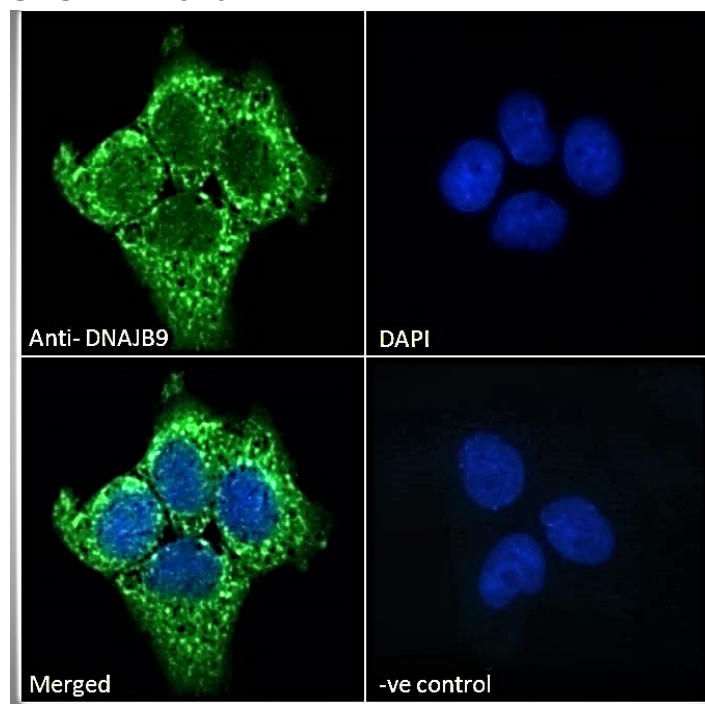


GOAT ANTI-DNAJB9 (AA61-75) ANTIBODY

SKU: EB11010



SPECIFICATIONS

Formulation Supplied at 0.5 mg/ml in Tris saline, 0.02% sodium azide, pH7.3 with 0.5% bovine serum albumin.

Unit Size 100 µg

Storage Instructions Aliquot and store at -20°C. Minimize freezing and thawing.

Synonym / Alias Names DNAJB9| MSTP049| MST049| microvascular endothelial differentiation gene 1 protein| mdg-1| MDG1| ERdj4| endoplasmic reticulum DnaJ homolog 4| dnaJ homolog subfamily B member 9| DnaJ (Hsp40) homolog, subfamily B, member 9| DKFZp564F1862| microvascular endothelial differentiation gene 1 protein| endoplasmic reticulum DnaJ homolog 4| dnaJ homolog subfamily B member 9| MSTP049| MST049| MDG1| ERdj4| DKFZp564F1862| DnaJ (Hsp40) homolog, subfamily B, member 9|DNAJB9

Usage Summary **Immunofluorescence:** Strong expression of the protein seen in the endoplasmic reticulum and cytoplasm of A431 and U2OS cells. Recommended concentration: 10µg/ml. **Flow Cytometry:** Flow cytometric analysis of A431 cells. Recommended concentration: 10ug/ml.

Accession ID NP_036460.1

Blocking Peptide EBP11010

Immunogen	Peptide with sequence C-PDAEAKFREIAEAYE, from the internal region of the protein sequence according to NP_036460.1.
Peptide Sequence	C-PDAEAKFREIAEAYE
Purification Method	Purified from goat serum by ammonium sulphate precipitation followed by antigen affinity chromatography using the immunizing peptide.
Shipping Instructions	Refrigerated
Predicted Species	Human, Mouse, Rat, Dog, Pig, Cow
Reactive Species	Human, Mouse
Human Gene ID	4189
Product Grade	https://prod-vector-labs-pimcore-assets.s3.us-east-1.amazonaws.com/assets/products/image/elite_plus_medium.png
ELISA Detection Limit	Antibody detection limit dilution 1:16000.
Western Blot	Approx 26-27kDa band observed in Human Liver and Kidney lysates and approx.28kDa in Mouse Liver lysates and in preliminary testing of Rat Liver lysate (calculated MW of 25.5kDa according to Human NP_036460.1 and 25.6kDa according to Mouse NP_038788.2). Recommended concentration: 1-3µg/ml. Primary incubation 1 hour at room temperature.
Application Type	Pep-ELISA, WB, IF, FC

DOCUMENTS

- [Data Sheet](#)

GALLERY IMAGES

