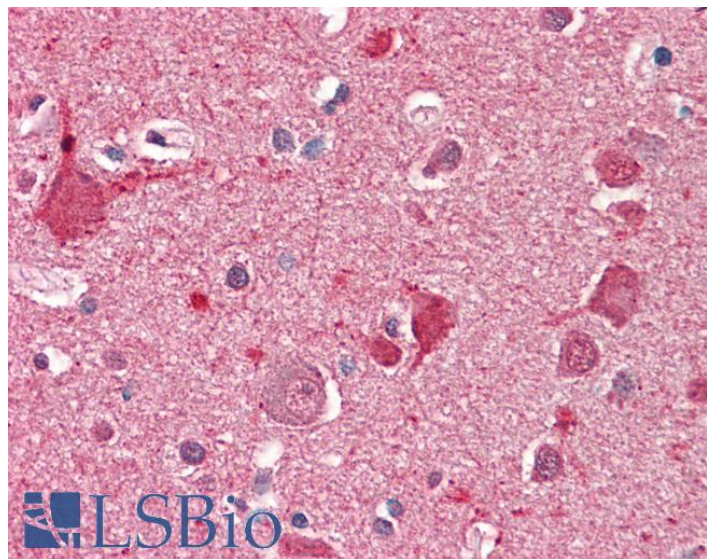


GOAT ANTI-DOC2A (AA233-246) ANTIBODY

SKU: EB11130



SPECIFICATIONS

Formulation Supplied at 0.5 mg/ml in Tris saline, 0.02% sodium azide, pH7.3 with 0.5% bovine serum albumin.

Unit Size 100 µg

Storage Instructions Aliquot and store at -20°C. Minimize freezing and thawing.

Synonym /

Alias Names Doc2| doc2-alpha| double C2-like domain-containing protein alpha| double C2-like domains, alpha|DOC2A

Accession ID NP_003577.2

Blocking Peptide EBP11130

Immunogen Peptide with sequence SCYLKELEQAEQGQ, from the internal region of the protein sequence according to NP_003577.2.

Peptide Sequence SCYLKELEQAEQGQ

Purification Method Purified from goat serum by ammonium sulphate precipitation followed by antigen affinity chromatography using the immunizing peptide.

Shipping Instructions Refrigerated

Predicted Species	Human, Mouse, Rat, Dog, Cow
Reactive Species	Human
Human Gene ID	8448
Mouse Gene ID	13446
Rat Gene ID	65031
Product Grade	https://prod-vector-labs-pimcore-assets.s3.us-east-1.amazonaws.com/assets/products/image/elite_medium.png
IHC Results	Paraffin embedded Human Brain (Cortex). Recommended concentration: 5µg/ml.
ELISA	
Detection Limit	Antibody detection limit dilution 1:16000.
Western Blot	Preliminary experiments gave an approx 50kDa band in Human, Mouse and Rat Brain lysates after 0.3 µg/ml antibody staining. Please note that currently we cannot find an explanation in the literature for the band we observe given the calculated size of 44kDa according to NP_003577.2. The 50kDa band was successfully blocked by incubation with the immunizing peptide.
Application Type	Pep-ELISA, IHC

DOCUMENTS

- [Data Sheet](#)

GALLERY IMAGES

