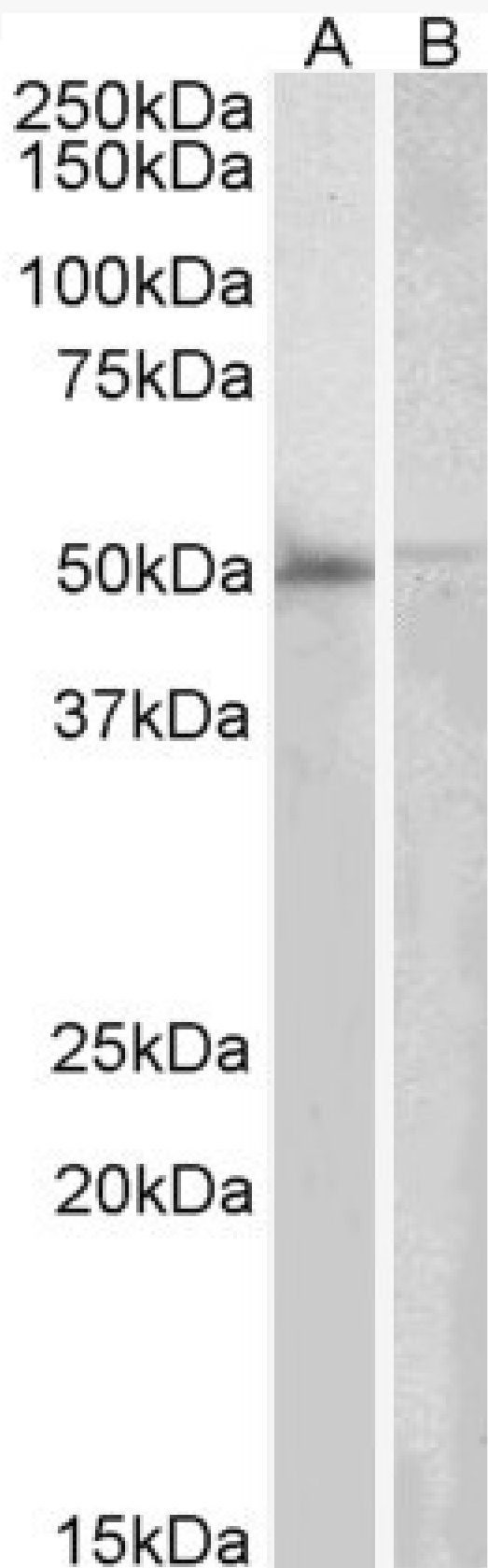


GOAT ANTI-DOK3 ANTIBODY

SKU: EB05210



SPECIFICATIONS

Formulation	Supplied at 0.5 mg/ml in Tris saline, 0.02% sodium azide, pH7.3 with 0.5% bovine serum albumin.
Unit Size	100 µg
Storage Instructions	Aliquot and store at -20°C. Minimize freezing and thawing.
Synonym / Alias Names	Dok-like protein FLJ39939 DOKL FLJ39939 FLJ22570 Docking Protein 3 DOK3
Accession ID	NP_079148.2
Blocking Peptide	EBP05210
Immunogen	Peptide with sequence TRERRKGPAPCDRP, from the C Terminus of the protein sequence according to NP_079148.2.
Peptide Sequence	TRERRKGPAPCDRP
Purification Method	Purified from goat serum by ammonium sulphate precipitation followed by antigen affinity chromatography using the immunizing peptide.
Shipping Instructions	Refrigerated
Predicted Species	Human, Mouse, Rat, Cow
Reactive Species	Human
Human Gene ID	79930
Mouse Gene ID	27261
Product Grade	https://prod-vector-labs-pimcore-assets.s3.us-east-1.amazonaws.com/assets/products/image/elite_medium.png
ELISA Detection Limit	Antibody detection limit dilution 1:128000.
Western Blot	Approx 50kDa band observed in Human Bone marrow and Human Peripheral Blood Mononucleocytes lysates (calculated MW of 50.3kDa according to NP_079148.2). Recommended concentration: 2-6µg/ml.
Application Type	Pep-ELISA, WB

DOCUMENTS

- [Data Sheet](#)

GALLERY IMAGES

