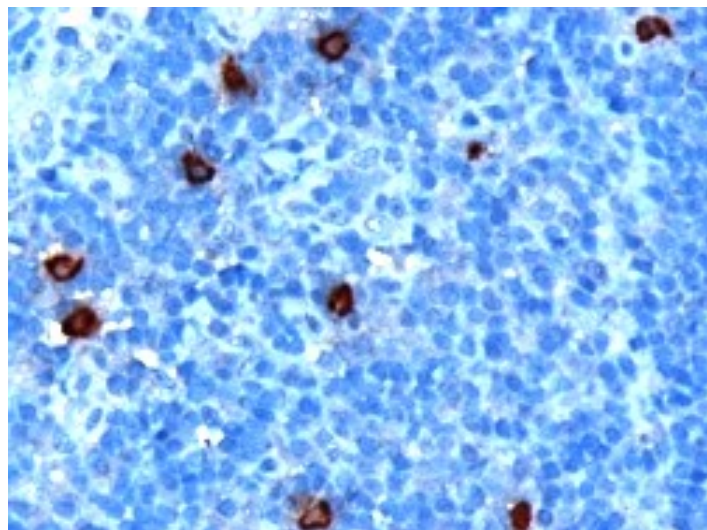


GOAT ANTI-DOK5 ANTIBODY

SKU: EB06517



SPECIFICATIONS

Formulation Supplied at 0.5 mg/ml in Tris saline, 0.02% sodium azide, pH7.3 with 0.5% bovine serum albumin.

Unit Size 100 µg

Storage Instructions Aliquot and store at -20°C. Minimize freezing and thawing.

Synonym / Alias Names chromosome 20 open reading frame 180|downstream of tyrosine kinase 5|docking protein 5|C20orf180|MGC16926|DOK5

Accession ID NP_060901.2; NP_808874.1

Blocking Peptide EBP06517

Immunogen Peptide with sequence CLHRTETFPAYRSEH, from the C Terminus of the protein sequence according to NP_060901.2; NP_808874.1.

Peptide Sequence CLHRTETFPAYRSEH

Purification Method Purified from goat serum by ammonium sulphate precipitation followed by antigen affinity chromatography using the immunizing peptide.

Shipping Instructions Refrigerated

Predicted Species	Human, Mouse, Rat, Dog, Pig, Cow
Reactive Species	Human
Human Gene ID	55816
Mouse Gene ID	76829
Product Grade	https://prod-vector-labs-pimcore-assets.s3.us-east-1.amazonaws.com/assets/products/image/elite_medium.png
IHC Results	In paraffin embedded tonsil, stains scattered cells in the interfollicular area compatible with mast cells. Recommended concentration: 1-2µg/ml.
ELISA	
Detection Limit	Antibody detection limit dilution 1:16000.
Application Type	Pep-ELISA, IHC

DOCUMENTS

- [Data Sheet](#)

GALLERY IMAGES

